



License Application for sustainable hand-harvesting of *Ascophyllum nodosum* in Kenmare Bay.

Appendix 1:

Assessment of potential interactions with archaeological sites.

Prepared by: BioAtlantis Ltd.
Date of revision: 29/07/2025

BioAtlantis Ltd,
Clash Industrial Estate,
Tralee,
Co. Kerry,
Ireland.

Contents

1. Introduction	3
2. Results	3
3. Tables	4
Table 1: Assessment of potential interactions with archaeological sites in Kenmare River SAC.	4
4. Map	23
Map 1: Distribution of archaeological sites in Kenmare and surrounding areas.	23

1. Introduction

This document provides an assessment of potential interactions of hand harvesting with archaeological sites in Kenmare River SAC. Data was obtained from the Historic Environment Viewer published by the National Monuments Service (<https://www.archaeology.ie/archaeological-survey-ireland/historic-environment-viewer-application>). The distribution of archaeological sites and zones of notification were assessed throughout the coastline of Kenmare River SAC. Where zones of notification cross the foreshore but the sites/monuments in question are located inland, mitigation was not deemed necessary. In cases where sites are located on the foreshore, or directly adjacent to the foreshore, mitigation was deemed necessary. In all such cases, these sites will be avoided by a distance of 20 meters. Prior to harvesting, the Resource Manager will mark these sites.

2. Results

A total of 59 sites, monuments and/or zones of notification were observed to cross the foreshore in Kenmare River SAC (see Table 1). Of these, 14 were observed to be either located on the foreshore itself or very close or adjacent to the foreshore. These sites are listed below. As shown in Table 1, mitigation measures are in place for each site.

List of sites/monuments on the foreshore, close to or directly adjacent to the foreshore:

- Code: CO102-001, Class: Fish palace, Townland: ARDGROOM INWARD, Coordinates: 467048, 556467.
- Code: CO102A002, Class: Fish palace, Townland: ARDGROOM INWARD, Coordinates: 470109, 557587.
- Code: CO114-022004, Class: Promontory fort – coastal, Townland: ALLIHIES, Coordinates: 457689, 545993.
- Code: KE092-052, Class: Midden, Townland: Dunkerron Island West, Coordinates: 486735, 568893.
- Code: KE093-035003, Class: Ritual site - holy well, Townland: KENMARE OLD, Coordinates: 492221, 570357.
- Code: KE093-099001, Class: Enclosure, Townland: KENMARE, Coordinates: 491439, 570643.
- Code: KE093-099002, Class: Souterrain, Townland: KENMARE, Coordinates: 491368, 570711.
- Code: KE093-100, Class: House - 16th/17th century, Townland: KILLOWEN, Coordinates: 492888, 571322.
- Code: KE100-040, Class: Ritual site - holy well, Townland: ROSSMORE ISLAND, Coordinates: 475683, 564594.
- Code: KE100-044, Class: Souterrain, Townland: CLOONEE, Coordinates: 477852, 563565.
- Code: KE101-003, Class: Children's burial ground, Townland: FEORAMORE, Coordinates: 483856, 566822.
- Code: KE106-129, Class: Midden, Townland: ABBEY ISLAND, Coordinates: 451971, 558387.
- Code: KE108-001, Class: Burial ground, Townland: SHERKY ISLAND, Coordinates: 468772, 561609.
- Code: KE108-005, Class: Fish palace, Townland: KILMAKILLOGE, Coordinates: 475374, 560242.

3. Tables

Table 1: Assessment of potential interactions with archaeological sites in Kenmare River SAC.

Red shading indicates potential interaction of site/monument with the foreshore. Green indicates no interaction with the foreshore.

No.	Site details (derived from www.archaeology.ie)	Zone of notification crosses foreshore?	Site present on/directly adjacent to foreshore?	Mitigation measure
1	<ul style="list-style-type: none"> • Code: CO102-001 • Class: Fish palace • Townland: ARDGROOM INWARD • Coordinates: 467048, 556467 • Description: On shoreline of narrow inlet on E side of Cleanderry Harbour; mentioned by O'Shea and Crowley (1972, 92). Central press beam support wall (L 13.7m; H 3.65m) enclosed by remains of structures to N, E and S, and by low wall to W. On N and S elev. of beam support wall are eighteen lintelled niches (Wth 0.25m; H 0.19m; D 0.19m) 0.35m above ground level, with eight beam holes (Wth 0.32m; H 0.35m) perforating wall 1.2m above ground level. • Ref: The above description is derived from the published 'Archaeological Inventory of County Cork. Vol. 1: West Cork' (Dublin: Stationery Office, 1992). 	Yes	Yes	This site will be avoided by distance of 20m. Prior to harvesting near this site, the Resource Manager will mark the site.
2	<ul style="list-style-type: none"> • Code: CO102A002 • Class: Fish palace • Townland: ARDGROOM INWARD • Coordinates: 470109, 557587 • Description: Local tradition of fish palace and associated settlement of twenty-one houses near pier in Pallas harbour. No visible surface trace. • Ref: The above description is derived from the published 'Archaeological Inventory of County Cork. Vol. 1: West Cork' (Dublin: Stationery Office, 1992). 	Yes	Yes	This site will be avoided by distance of 20m. Prior to harvesting near this site, the Resource Manager will mark the site.
3	<ul style="list-style-type: none"> • Code: CO114-022004- • Class: Promontory fort - coastal • Townland: ALLIHIES • Coordinates: 457689, 545993 • Description: On a rocky promontory, jutting W into the sea, with tall cliffs on its S, W and N sides. This promontory is named Dooneen on the 1897-1909 OS 6-inch map and is still known locally as such. The Doon [Dún] element in the name suggests that there may have been a promontory fort here. The promontory and its environs was mined for copper in the early 19th century 	Yes	Yes	This site will be avoided by distance of 20m. Prior to harvesting near this site, the Resource Manager will mark the site.

No.	Site details (derived from www.archaeology.ie)	Zone of notification crosses foreshore?	Site present on/directly adjacent to foreshore?	Mitigation measure
	<p>and any traces of the fort would have been destroyed at that time. An abandoned mineshaft and mining waste occupy the E end of the promontory.</p> <ul style="list-style-type: none"> • Ref: The above description is derived from 'The Archaeological Inventory of County Cork. Volume 5' (Dublin: Stationery Office, 2009). 			
4	<ul style="list-style-type: none"> • Code: CO114-023 • Class: Anomalous stone group • Townland: ALLIHIES • Coordinates: 457440, 544989 • Description: On low mound in boggy ground overlooking sea. Group of nine partially embedded stones, two of which are upright (H 1.16m; 0.9m x 0.8m; H 1.15m; 0.83m x 0.36m), forming a rough circle. Three larger stones rest on these at SSW and NNE ends. One stone protrudes slightly in centre which is otherwise clear. Known locally as 'grappadgh' (O'Shea and Crowley 1972, 95). • Ref: The above description is derived from the published 'Archaeological Inventory of County Cork. Volume 1: West Cork' (Dublin: Stationery Office, 1992). 	Yes	No	Mitigation not required as site/monument is located inland.
5	<ul style="list-style-type: none"> • Code: CO114-043 • Class: Standing stone • Townland: URHIN • Coordinates: 460721, 548638 • Description: In pasture overlooking Coulagh Bay. Rectangular stone (H 1.22m; 0.56m x 0.35m), long axis E-W. Three small cup-marks (max. diam. 0.05m) on S face. Picked dressing on S face, upper surface and top of E face. • Ref: The above description is derived from the published 'Archaeological Inventory of County Cork. Volume 1: West Cork' (Dublin: Stationery Office, 1992). 	Yes	No	Mitigation not required as site/monument is located inland.
6	<ul style="list-style-type: none"> • Code: CO114-046001 • Class: Boulder-burial • Townland: URHIN • Coordinates: 461226, 548872 • Description: In cut-away bog c. 100m from shore on S side of Coulagh Bay. Flat-topped boulder (1.4m x 1.1m; T 0.6m) resting above three support stones. Standing stone (CO114-04602-) 1.7m to S. • Ref: The above description is derived from the published 'Archaeological Inventory of County Cork. Volume 1: West Cork' (Dublin: Stationery Office, 1992). 	Yes	No	Mitigation not required as site/monument is located inland.
7	<ul style="list-style-type: none"> • Code: CO114-056 • Class: Cairn - unclassified 	Yes	No	Mitigation not required as site/monument is located inland.

No.	Site details (derived from www.archaeology.ie)	Zone of notification crosses foreshore?	Site present on/directly adjacent to foreshore?	Mitigation measure
	<ul style="list-style-type: none"> • Townland: CAHERKEEN • Coordinates: 460147, 548831 • Description: On cliff-edge overlooking Coulagh Bay to N. According to local information, cairn of earth and stone (diam. c. 4m; H c. 1.75m) stood here; partially eroded by sea and remainder removed by landowner. Field known as "reen na gcarran" - point of the cairn. • Ref: The above description is derived from the published 'Archaeological Inventory of County Cork. Volume 1: West Cork' (Dublin: Stationery Office, 1992). 			
8	<ul style="list-style-type: none"> • Code: CO114-066001 • Class: Children's burial ground • Townland: REENTRUSK • Coordinates: 457576, 548393 • Description: In pasture, close to the seashore on an E-facing slope overlooking Coulagh Bay. A roughly triangular area (8.2m N-S; 8m E-W) enclosed by an earth and stone bank (max. Wth 1.8m; max. H 0.6m) on the SE and SW sides and elsewhere by a low scarp. The enclosed area was used as a children's burial ground and is known locally as a 'cillíneach'. It contains a small number of uninscribed upright stone grave-markers. An enclosure (CO114-066002-) lies c. 20m to the SE. • Ref: The above description is derived from 'The Archaeological Inventory of County Cork. Volume 5' (Dublin: Stationery Office, 2009). 	Yes	No	Mitigation not required as site/monument is located inland.
9	<ul style="list-style-type: none"> • Code: CO114-066002- • Class: Enclosure • Townland: REENTRUSK • Coordinates: 457591, 548380 • Description: In pasture, close to the seashore, on an E-facing slope overlooking Coulagh Bay. A circular area (diam. 8m) is defined by a scarp (H 0.2m) NE-SW and by a bank (int. H 0.3m) cut into the upslope SW-NW. This gives an almost level interior. There is a children's burial ground (CO114-066001-) c. 20m to the NW. • Ref: The above description is derived from 'The Archaeological Inventory of County Cork. Volume 5' (Dublin: Stationery Office, 2009). 	Yes	No	Mitigation not required as site/monument is located inland.
10	<ul style="list-style-type: none"> • Code: CO126-001 • Class: Souterrain • Townland: GARINISH (Bear By., Kilnamanagh Par.) • Coordinates: 452337, 543199 • Description: On Garinish Island. Passage with six cubicles opening from it and large slab at end (McCarthy 1977, 355). 	Yes	No	Mitigation not required as site/monument is located inland.

No.	Site details (derived from www.archaeology.ie)	Zone of notification crosses foreshore?	Site present on/directly adjacent to foreshore?	Mitigation measure
	<ul style="list-style-type: none"> • Ref: The above description is derived from the published 'Archaeological Inventory of County Cork. Volume 1: West Cork' (Dublin: Stationery Office, 1992). 			
11	<ul style="list-style-type: none"> • Code: CO126-012001 • Class: Castle - unclassified • Townland: BALLYNACALLAGH • Coordinates: 450366, 541141 • Description: On grassy island just separated from SE corner of Dursey Island by narrow gorge; sod-covered remains of two rectangular buildings within a rectangular enclosure (23m N-S; 31.3m E-W). Garrisoned by O'Sullivan Beare in 1602 but taken by Carew before the fall of Dunboy (Healy 1988, 196). • Ref: The above description is derived from the published 'Archaeological Inventory of County Cork. Volume 1: West Cork' (Dublin: Stationery Office, 1992). 	Yes	No	Mitigation not required as site/monument is located inland.
12	<ul style="list-style-type: none"> • Code: CO126-012002- • Class: Bridge • Townland: BALLYNACALLAGH • Coordinates: 450393, 541222 • Description: Site of draw bridge which connected small island, containing O'Sullivan Beare Castle (CO126-012001-), to the mainland. Twelve rock-cut steps on mainland side lead down to a rocky ledge. • Ref: The above description is derived from the published 'Archaeological Inventory of County Cork. Volume 1: West Cork' (Dublin: Stationery Office, 1992). 	Yes	No	Mitigation not required as site/monument is located inland.
13	<ul style="list-style-type: none"> • Code: CO126-012003 • Class: Graveyard • Townland: BALLYNACALLAGH • Coordinates: 450433, 541312 • Description: Rectangular yard enclosed by modern stone wall at SE edge of Dursey Island. Few modern headstones but lines of low uninscribed stones throughout. Contains ruined church (CO126-012005-). • Ref: The above description is derived from the published 'Archaeological Inventory of County Cork. Volume 1: West Cork' (Dublin: Stationery Office, 1992). 	Yes	No	Mitigation not required as site/monument is located inland.
14	<ul style="list-style-type: none"> • Code: CO126-012004- • Class: Tomb - unclassified • Townland: BALLYNACALLAGH • Coordinates: 450434, 541317 	Yes	No	Mitigation not required as site/monument is located inland.

No.	Site details (derived from www.archaeology.ie)	Zone of notification crosses foreshore?	Site present on/directly adjacent to foreshore?	Mitigation measure
	<ul style="list-style-type: none"> • Description: Partially overlying W wall of church (CO126-012005-) stone-built vault bearing inscription "THIS TOMB WAS ERECTED FOR DAN O'SULLIVAN WHO DEPARTED THIS LIFE JAN ? 1787". • Ref: Compiled by: Archaeological Survey Unit, UCC. 			
15	<ul style="list-style-type: none"> • Code: CO126-030001- • Class: Hut site • Townland: BALLYNACALLAGH • Coordinates: 450414, 541121 • Description: In pasture, beside the rocky seashore on the SE-facing slopes of a small island, Ilanebeg, overlooking Dursey Sound. The fern-covered remains of a rectangular hut site (6m E-W; 3.3m N-S) defined by an earthen bank (Wth 0.9m; H 0.3m). The cliff-edge of an inlet is 3m to the N. There is a hut site (CO126-030005-) c. 16m to the SE. (Breen 2003b; 2006, 36) • Ref: The above description is derived from 'The Archaeological Inventory of County Cork. Volume 5' (Dublin: Stationery Office, 2009). 	Yes	No	Mitigation not required as site/monument is located inland.
16	<ul style="list-style-type: none"> • Code: CO126-030002- • Class: Hut site • Townland: BALLYNACALLAGH • Coordinates: 450409, 541065 • Description: In pasture, beside the rocky seashore on the SE-facing slopes of a small island, Ilanebeg, overlooking Dursey Sound. The sod-covered remains of a D-shaped hut site (4.3m NW-SE) defined by a curving earthen bank (Wth 0.8m; H 0.2m) with a straight NW side (L 3.55m). A sheep path cuts through the bank along the SSE arc. Another hut site (CO126-030003-) is c. 28m to the NE. (Breen 2003b; 2006, 36) • Ref: The above description is derived from 'The Archaeological Inventory of County Cork. Volume 5' (Dublin: Stationery Office, 2009). 	Yes	No	Mitigation not required as site/monument is located inland.
17	<ul style="list-style-type: none"> • Code: CO126-030003- • Class: Hut site • Townland: BALLYNACALLAGH • Coordinates: 450426, 541088 • Description: In pasture, beside the rocky seashore on the SE-facing slopes of a small island, Ilanebeg, overlooking Dursey Sound. The sod-covered remains of a rectangular hut site (4.4m NW-SE; 3.4m NE-SW) defined by an earthen bank (Wth 0.8m; H 0.1m) at the SW and NW sides with only traces of the bank remaining at the SE and NE sides. Another hut site (CO126-030004-) is c. 10m to the NE. (Breen 2003b; 2006, 36) • Ref: The above description is derived from 'The Archaeological Inventory of County Cork. Volume 5' (Dublin: Stationery Office, 2009). 	Yes	No	Mitigation not required as site/monument is located inland.

No.	Site details (derived from www.archaeology.ie)	Zone of notification crosses foreshore?	Site present on/directly adjacent to foreshore?	Mitigation measure
18	<ul style="list-style-type: none"> • Code: CO126-030004- • Class: Hut site • Townland: BALLYNACALLAGH • Coordinates: 450431, 541099 • Description: In pasture, on a slight elevation beside the rocky seashore, on the SE-facing slopes of a small island, Ilanebeg, overlooking Dursey Sound. The sod-covered remains of a rectangular hut site (4.4m NW-SE; 2m NE-SW) defined by an earthen bank (Wth 0.85m; H 0.4m). Stones are visible at irregular intervals along the bank. A sheep path cuts through and has damaged the SW and NW banks. Another hut site (CO126-030005-) is c. 10m to the N. (Breen 2003b; 2006, 36) • Ref: The above description is derived from 'The Archaeological Inventory of County Cork. Volume 5' (Dublin: Stationery Office, 2009). 	Yes	No	Mitigation not required as site/monument is located inland.
19	<ul style="list-style-type: none"> • Code: CO126-030005 • Class: Hut site • Townland: BALLYNACALLAGH • Coordinates: 450432, 541111 • Description: In pasture, on a slight elevation beside the rocky seashore, on the SE-facing slopes of a small island, Ilanebeg, overlooking Dursey Sound. This subrectangular hut site (L 5.3m E-W; Wth 3.6m N-S), defined by grass-covered stone walls (av. Wth 1.2m), is divided into an E and W area by an internal partition and has traces of opposing entrances on its N and S walls. Test excavations were carried out in 2003 in the SW quadrant of the hut site (Breen 2003b; 2006, 36). Excavation uncovered the remains of the internal drystone partition wall that divided the hut into a small featureless W area and a main area where a hearth was located. According to Breen (2006, 36), the material culture was dominated by Iberian pottery and tiles, probably reflecting the community's involvement with the continental fishing industry. This hut site is associated with a small U-shaped structure, located directly to the N, which is open to the W. Another hut site (CO126-030004-) is c. 10m to the S. • Ref: The above description is derived from 'The Archaeological Inventory of County Cork. Volume 5' (Dublin: Stationery Office, 2009). 	Yes	No	Mitigation not required as site/monument is located inland.
20	<ul style="list-style-type: none"> • Code: CO126-030006- • Class: Hut site • Townland: BALLYNACALLAGH • Coordinates: 450406, 541111 • Description: In pasture, on a slight elevation beside the rocky seashore on the SE-facing slopes of a small island, Ilanebeg, overlooking Dursey Sound. The sod-covered remains of a rectangular hut site (5m E-W; 2.8m N-S) defined by an earthen bank (Wth 0.9m; H 0.35m). A sheep path cuts through and has damaged the N and S banks of the hut site. There is a hut site (CO126-030001-) c. 14m to the NE and another (CO126-030007-) is c. 15m to the W. (Breen 2003b; 2006, 36) 	Yes	No	Mitigation not required as site/monument is located inland.

No.	Site details (derived from www.archaeology.ie)	Zone of notification crosses foreshore?	Site present on/directly adjacent to foreshore?	Mitigation measure
	<ul style="list-style-type: none"> • Ref: The above description is derived from 'The Archaeological Inventory of County Cork. Volume 5' (Dublin: Stationery Office, 2009). 			
21	<ul style="list-style-type: none"> • Code: CO126-030007- • Class: Hut site • Townland: BALLYNACALLAGH • Coordinates: 450389, 541105 • Description: In pasture, on a slight elevation beside the rocky seashore on the SE-facing slopes of a small island, Ilanebeg, overlooking Dursey Sound. The sod-covered remains of a rectangular hut site (3.3m E-W; 2.6m N-S) defined by an earthen bank (Wth 0.85m; H 0.15m). The cliff-edge of an inlet is 3m to the N. Another hut site (CO126-030006-) is c. 15m to the E. (Breen 2003b; 2006, 36) • Ref: The above description is derived from 'The Archaeological Inventory of County Cork. Volume 5' (Dublin: Stationery Office, 2009). 	Yes	No	Mitigation not required as site/monument is located inland.
22	<ul style="list-style-type: none"> • Code: CO126-050 • Class: Promontory fort - coastal • Townland: BALLYNACALLAGH • Coordinates: 450395, 541145 • Description: Promontory fort – coastal • Ref: www.archaeology.ie 	Yes	No	Mitigation not required as site/monument is located inland.
23	<ul style="list-style-type: none"> • Code: CO127-001001- • Class: Promontory fort - coastal • Townland: CLOGHFUNE • Coordinates: 455853, 543002 • Description: Small rectangular area projecting NE into Ballydonegan Bay. Slight neck (Wth 30m) defended by earthen bank (H 3.85m) and fosse (D 2.1m) which has been levelled for 11m from cliff-edge to N. Westropp (1921, 6) notes bank faced with "fairly large slabs"; these no longer visible. Interior slopes down steeply to N and S; enclosed by field fenced (not noted by Westropp). Possible souterrain (CO127-001002-) inside bank to SE. • Ref: The above description is derived from the published 'Archaeological Inventory of County Cork. Volume 1: West Cork' (Dublin: Stationery Office, 1992). 	Yes	No	Mitigation not required as site/monument is located inland.
24	<ul style="list-style-type: none"> • Code: CO127-001002 • Class: Souterrain • Townland: CLOGHFUNE • Coordinates: 455837, 542973 	Yes	No	Mitigation not required as site/monument is located inland.

No.	Site details (derived from www.archaeology.ie)	Zone of notification crosses foreshore?	Site present on/directly adjacent to foreshore?	Mitigation measure
	<ul style="list-style-type: none"> • Description: Shallow depression (diam. 1.6m) inside S bank coastal promontory fort (CO127-001001-) may indicate presence of souterrain. • Ref: The above description is derived from the published 'Archaeological Inventory of County Cork. Volume 1: West Cork' (Dublin: Stationery Office, 1992). 			
25	<ul style="list-style-type: none"> • Code: CO127-002001- • Class: Promontory fort - coastal • Townland: CLOGHFUNE • Coordinates: 456010, 542916 • Description: Small oval area projecting N into Ballydonegan Bay, isolated from mainland by long narrow neck. Stone-based earthen bank (H 2.9m) crosses neck at junction with interior. Break in bank to SE (Wth 1.5m); stone (H 0.9m; 0.38m; 0.15m) on E side of break described by Westropp (1921, 5) as 'a gate pier'. Interior much collapse into sea, particularly on NE side. Possible souterrain (CO127-002002-) to W. • Ref: The above description is derived from the published 'Archaeological Inventory of County Cork. Volume 1: West Cork' (Dublin: Stationery Office, 1992). 	Yes	No	Mitigation not required as site/monument is located inland.
26	<ul style="list-style-type: none"> • Code: CO127-034 • Class: Enclosure • Townland: ALLIHIES • Coordinates: 457158, 544374 • Description: In level pasture, beside the N shore of Ballydonegan Bay. A circular raised area (11.7m N-S; 11.4m E-W; H 1.2m above outer ground level) is defined by a scarp (H 1.2m) with a low earthen bank (Wth 2.7m; int. H 0.3m) at WSW, NW-NE and SE-SSE along the top of the perimeter. Part of the SW arc is damaged and contains grass-covered upcast and a short section of the S arc is truncated by the E-W wall of an old road at S. • Ref: The above description is derived from 'The Archaeological Inventory of County Cork. Volume 5' (Dublin: Stationery Office, 2009). 	Yes	No	Mitigation not required as site/monument is located inland.
27	<ul style="list-style-type: none"> • Code: CO127-044 • Class: Children's burial ground • Townland: CLOGHFUNE • Coordinates: 455616, 543194 • Description: On an overgrown eroding promontory, with high cliffs on three sides, which juts NE into Ballydonegan Bay. The promontory (c. 25m NE-SW; c. 10m NW-SE) is the site of a 'cillíneach' or children's burial ground and some plain uninscribed stone grave-markers were noted. 	Yes	No	Mitigation not required as site/monument is located inland.

No.	Site details (derived from www.archaeology.ie)	Zone of notification crosses foreshore?	Site present on/directly adjacent to foreshore?	Mitigation measure
	<ul style="list-style-type: none"> • Ref: The above description is derived from 'The Archaeological Inventory of County Cork. Volume 5' (Dublin: Stationery Office, 2009). 			
28	<ul style="list-style-type: none"> • Code: CO127-049 • Class: Penitential station • Townland: BALLYDONEGAN • Coordinates: 457312, 543784 • Description: In level pasture, beside the SE shore of Ballydonegan Bay and with distant views of Sceilg Mhichíl. A circular cairn (1.6m E-W; 1.55m N-S; H 0.45m) of stones which, according to local information, was formerly visited by pilgrims. There are several quartz stones on the cairn, which is partially overgrown with grass, and a large slab is exposed at NE. • Ref: The above description is derived from 'The Archaeological Inventory of County Cork. Volume 5' (Dublin: Stationery Office, 2009). 	Yes	No	Mitigation not required as site/monument is located inland.
29	<ul style="list-style-type: none"> • Code: KE092-034 • Class: Graveyard • Townland: GREENANE • Coordinates: 485009, 569514 • Description: Templenoe Church / An Teampall Nua (KE092-034001-) stands in a graveyard (KE092-034-) on the N shore of Kenmare Bay, overlooking the Greenane Islands at S. It is noted in RIA MS 24 K 43 that both it and the nearby Cappanacush castle (KE092-033-) were built by Cor, grandson of Macarius, of the Sliocht Mac Crah – a branch of the O'Sullivan Mores. This personage has been identified as Conchur O'Sullivan, whose floruit was before c. 1450 (Ó Cíobháin 1985, lxx). A fiant of 1576 records the leasing of half of the rectory of 'Templenoe, alias New Church' to Thomas Clinton (Hickson 1891, 48), and the church appears to have still been in repair in 1615 (Royal Visitation). It was included in the listing of parochial churches in the diocese in 1622, and in 1633 Edwardus Grayne is noted as minister of both Templenoe and 'Killcroghan' (TCD MS 2158, 37, 94). The church was in ruins by the middle of the eighteenth century (Smith 1756, 71). The first edition of the OS map depicts a T-shaped Catholic chapel built against the N wall of the Medieval church. This appears to have been dismantled by 1895, when only the Medieval building is indicated on the second edition map. Tombs and graves, the earliest of which is dated 1881, now occupy the former position of the chapel. • Ref: The above description is derived from [REDACTED] (compilers), 'The Iveragh peninsula: an archaeological survey of South Kerry'. Cork University Press (1996), no. 1093. 	Yes	No	Mitigation not required as site/monument is located inland.
30	<ul style="list-style-type: none"> • Code: KE092-034001 • Class: Church • Townland: GREENANE • Coordinates: 485019, 569512 	Yes	No	Mitigation not required as site/monument is located inland.

No.	Site details (derived from www.archaeology.ie)	Zone of notification crosses foreshore?	Site present on/directly adjacent to foreshore?	Mitigation measure
	<ul style="list-style-type: none"> • Description: Templehoe Church / An Teampall Nua: This parish church stands in a graveyard (KE092-034-) on the N shore of Kenmare Bay, overlooking the Greenane Islands at S. Further site details can be obtained from www.archaeology.ie. • Ref: The above description is derived from [REDACTED] (compilers), 'The Iveragh peninsula: an archaeological survey of South Kerry'. Cork University Press (1996), no. 1093. 			
31	<ul style="list-style-type: none"> • Code: KE092-052 • Class: Midden • Townland: Dunkerron Island West • Coordinates: 486735, 568893 • Description: This shell midden is located on the S shore of Dunkerron Island, a short distance NE of Carrigmore point. Over 55m in total length, it survives as a large mass of oyster shells at least 7m wide and .75m thick. A thin sod layer, .05m thick, overlies the deposit which has some stone content. The island was noted in a mid-eighteenth century manuscript for its abundance of oysters (RIA MS 24 K 43). • Ref: The above description is derived from [REDACTED] (compilers), 'The Iveragh peninsula: an archaeological survey of South Kerry'. Cork University Press (1996), no. 11. 	Yes	Yes	This site will be avoided by distance of 20m. Prior to harvesting near this site, the Resource Manager will mark the site.
32	<ul style="list-style-type: none"> • Code: KE093-033 • Class: Ringfort - cashel • Townland: TUBBRID (Dunkerron South By.) • Coordinates: 489451, 570129 • Description: Internal diam. 37.5m NE-SW The poorly preserved remains of this caher are located in low-lying pasture on the N side of Kenmare Bay. The site is bounded by modern field walls at W and S, as depicted on the second edition of the OS map. The enclosing element is extant from NNW to SE, though much of it is reduced to a band of sod-covered debris. However, a stretch of neatly coursed inner and outer facing, enclosing a rubble core, is visible at SE. This is preserved to an external height of .8m, an internal height of .3m and a width of 2m. Field clearance material abuts the external circuit of the wall. A scatter of stone occurs in the interior, but forms no recognisable pattern. • Ref: The above description is derived from [REDACTED] (compilers), 'The Iveragh peninsula: an archaeological survey of South Kerry'. Cork University Press (1996), no. 625. 	Yes	No	Mitigation not required as site/monument is located inland.
33	<ul style="list-style-type: none"> • Code: KE093-035001 • Class: Church • Townland: KENMARE OLD • Coordinates: 492149, 570347 • Description: In the NE corner of the graveyard (KE093-035002-). The ruin of a church comprising a nave (int. dims. 10.55m E-W; 7.15m N-S) and a chancel (int. dims. 7.05m E-W; 4.7m N-S). Further site details can be obtained from www.archaeology.ie. 	Yes	No	Mitigation not required as site/monument is located inland.

No.	Site details (derived from www.archaeology.ie)	Zone of notification crosses foreshore?	Site present on/directly adjacent to foreshore?	Mitigation measure
	<ul style="list-style-type: none"> • Ref: The above description is derived from the published 'Archaeological Inventory of County Kerry. Volume I: South-West Kerry' (Dublin: Stationery Office, 2009). 			
34	<ul style="list-style-type: none"> • Code: KE093-035002 • Class: Graveyard • Townland: KENMARE OLD • Coordinates: 492160, 570310 • Description: In pasture, on a NNE-facing slope on the S shore of Kenmare Bay. A subrectangular area (c. 230m E-W; c. 100m N-S) with the entrance near the SW corner. The ruin of a church (KE093-035001-) stands in the NE corner. The graveyard is still in use with recent burials occurring mostly in the W section. Late 18th-century grave-markers occur in the E section and there are ivy-covered altar-tombs in the central and E sections as well as a famine plot with a memorial plaque at the centre. A holy well (KE093-035003-) is on the shoreline to the NE. • Ref: Compiled by: [REDACTED] Archaeological Survey Unit, University College, Cork. Date of upload: 30 May 2011 	Yes	No	Mitigation not required as site/monument is located inland.
35	<ul style="list-style-type: none"> • Code: KE093-035003 • Class: Ritual site - holy well • Townland: KENMARE OLD • Coordinates: 492221, 570357 • Description: At the foot of a steep N-facing slope, on the S shore of Kenmare Bay. The well, which is dedicated to St Finan, lies outside the NE corner of a graveyard (KE093-035002-) in which are the ruins of a church (KE093-035001-) associated with St Finan. It is covered by a recently built stone structure with a rectangular lintelled opening (H 0.63m; Wth 0.65m) from which a small stream flows. A simple Latin cross has been repeatedly scratched on outcropping rock on the N side of the well. The well is still in use as evidenced by ribbons tied to an overhanging holly tree. Pilgrims pray 'for the cure of eye ailments, as the saint himself [St Finan] had a fault with his sight' (McCarthy 1993, 14). In the 1840s it was recorded that 'patterns' were annually held here on 3 May and 14 September 'until twenty years since when they were abolished' though it was also noted that stations continued to be performed and 'many diseases are cured by its sacred waters' (OSL, 183). • Ref: The above description is derived from the published 'Archaeological Inventory of County Kerry. Volume I: South-West Kerry' (Dublin: Stationery Office, 2009). 	Yes	Yes	This site will be avoided by distance of 20m. Prior to harvesting near this site, the Resource Manager will mark the site.
36	<ul style="list-style-type: none"> • Code: KE093-036001 • Class: Fortification • Townland: KENMARE • Coordinates: 490991, 570013 	Yes	No	Mitigation not required as site/monument is located inland.

No.	Site details (derived from www.archaeology.ie)	Zone of notification crosses foreshore?	Site present on/directly adjacent to foreshore?	Mitigation measure
	<ul style="list-style-type: none"> • Description: In a public park on a peninsula projecting from the N side of Kenmare Bay with extensive views in all directions. Not visible at ground level. Lewis (1849, 6) states: "Near the ferry, or Sound, are the remains of a tower, called Cromwell's Fort". Also named 'Site of Cromwell's Fort' on 1846 OS 6-inch map. See KE093-036002-. • Ref: Compiled by: [REDACTED] Archaeological Survey Unit, University College, Cork. Date of upload: 30 May 2011 			
37	<ul style="list-style-type: none"> • Code: KE093-099001 • Class: Enclosure • Townland: KENMARE • Coordinates: 491439, 570643 • Description: In mixed pasture and woodland, close to the S shore of a tidal inlet extending to the W from Kenmare Bay. The area is known locally as Reenagross and is covered by spring tides. A roughly oval raised area (37.1m NE-SW; 26.8m NW-SE) defined by a low earthen bank (Wth 1.9m; int. H 0.35m; H 1m) NE-WSW with only slight traces of it elsewhere. A shallow fosse (Wth 1.15m) is evident N-E and SSW-W with a short stretch filled-in at SW. A low outer bank (Wth 0.75m; H 0.1m; ext. H 0.2m) is evident N-W. There are several cattle-breaks around the perimeter. A possible entrance (Wth 1.5m) with an earthen ramp is at E. The interior rises gently towards the centre and in general it is raised c. 1m above the outer ground level. A souterrain (KE093-099002-), c. 80m to the NW, is close to the opposite shore of the inlet. • Ref: The above description is derived from the published 'Archaeological Inventory of County Kerry. Volume I: South-West Kerry' (Dublin: Stationery Office, 2009). 	Yes	Yes	This site will be avoided by distance of 20m. Prior to harvesting near this site, the Resource Manager will mark the site.
38	<ul style="list-style-type: none"> • Code: KE093-099002 • Class: Souterrain • Townland: KENMARE • Coordinates: 491368, 570711 • Description: In woodland, on a SE-facing outcropping rock close to the N shore of the inlet extending W from Kenmare bay. The souterrain consists of a chamber (L 5.2m; Wth c. 1m) which slopes down to the S from the entrance. The sides of the chamber are vertical and appear to be cut from the natural rock. The roof is lintelled and has some packing-stones. Debris at the S end of the chamber appears to have fallen through a small opening. There is a rath (KE093-099001-) on the opposite shore of the inlet. • Ref: The above description is derived from the published 'Archaeological Inventory of County Kerry. Volume I: South-West Kerry' (Dublin: Stationery Office, 2009). 	Yes	Yes	This site will be avoided by distance of 20m. Prior to harvesting near this site, the Resource Manager will mark the site.
39	<ul style="list-style-type: none"> • Code: KE093-100 • Class: House - 16th/17th century • Townland: KILLOWEN • Coordinates: 492888, 571322 	Yes	Yes	This site will be avoided by distance of 20m. Prior to harvesting near this site, the Resource Manager will mark the site.

No.	Site details (derived from www.archaeology.ie)	Zone of notification crosses foreshore?	Site present on/directly adjacent to foreshore?	Mitigation measure
	<ul style="list-style-type: none"> • Description: In pasture, on the gentle rise of a headland on the N shore of Kenmare Bay. The ruin of a rectangular (ext. dims. 14.5m x 7m) two-storey house (long axis WSW-ENE) consisting of gable ends which still stand to first floor height and short returns of the sidewalls. There are fragmentary remains of internally projecting fireplaces, that originally had large wooden lintels. According to local information, the house was built c. 1673 as part of Sir William Petty's 17th-century plantation and was the site of a siege in 1688/9. According to Bary (1994, 244), the house was defended by the erection of earthworks but there are no visible remains of these. According to Orpen (1930, 41), two wooden balconies were added to opposite corners of the house for defensive purposes (Orpen 1930, 75). McCarthy (1993, 41) describes the house as having 'four large rooms and a garret and two fine hearths with high chimneys.' In an entry in Sir William Petty's journal dated 30 August 1683 this house is referred to as 'Killowen house' (Wood 1934, 39); this has subsequently resulted in some confusion between this and another house (KE093-021001-), in the same townland, which is named 'Killowen Ho.' on the OS 6-inch map. • Ref: The above description is derived from the published 'Archaeological Inventory of County Kerry. Volume I: South-West Kerry' (Dublin: Stationery Office, 2009). 			
40	<ul style="list-style-type: none"> • Code: KE100-022001 • Class: Castle - unclassified • Townland: ARDEA • Coordinates: 477398, 562821 • Description: On top of a cliff, overlooking Kenmare Bay to the NW. A roughly D-shaped area (c. 30m NW-SE; c. 30m NE-SW) enclosed by a curtain wall from NE to SW and elsewhere defined by the cliff-edge (see plan Salter 2004, 94). Further site details can be obtained from www.archaeology.ie. • Ref: The above description is derived from the published 'Archaeological Inventory of County Kerry. Volume I: South-West Kerry' (Dublin: Stationery Office, 2009). 	Yes	No	Mitigation not required as site/monument is located inland.
41	<ul style="list-style-type: none"> • Code: KE100-022002 • Class: Redundant record • Townland: ARDEA • Coordinates: 477384, 562834 • Description: This record was formerly classed as a 'possible souterrain' in the SMR (1990) and the RMP (1997) based on the recording in the 1930s by Capt. D. B. O'Connell of a 'stone stairs leading into the ground' at the centre of a 'flat circle of grass' situated 'within the present walls' of Ardea castle (KE100-022001-) (KAS). While the exact nature of this feature is unclear it is very unlikely to be a souterrain. It is best considered as part of the castle and is therefore described and included under that record number (KE100-022001-). • Ref: Compiled by: [REDACTED], Archaeological Survey Unit, University College, Cork. Date of upload: 30 May 2011 	Yes	No	Mitigation not required as site/monument is located inland.

No.	Site details (derived from www.archaeology.ie)	Zone of notification crosses foreshore?	Site present on/directly adjacent to foreshore?	Mitigation measure
42	<ul style="list-style-type: none"> • Code: KE100-040 • Class: Ritual site - holy well • Townland: ROSSMORE ISLAND • Coordinates: 475683, 564594 • Description: Located on the rocky SE shore of Rossmore Island, about 130m SE of a ceallúnach burial ground (KE100-021001-), are two rock pools which become contaminated with salt water during spring tides. Depressions on a nearby rock surface are reputed to be the marks of a horse's hooves. Ó Ciobháin in records that one of the pools was locally called 'The Blessed Well' (1984b, 89). A holy well at Rossmore is noted in the IFC Schools' Collection. 	Yes	Yes	This site will be avoided by distance of 20m. Prior to harvesting near this site, the Resource Manager will mark the site.
43	<ul style="list-style-type: none"> • Code: KE100-044 • Class: Souterrain • Townland: CLOONEE • Coordinates: 477852, 563565 • Description: In rough pasture broken by rock outcrops, on the S shore of Kenmare Bay. SMR file does not record the source of the information or any details of this possible souterrain, apart from a mark indicating its location on a second edition OS 6-inch map extract (SMR file). Due to the uncertainty regarding its nature and its source, it cannot be included in the Inventory. There are no visible remains or local knowledge of this possible souterrain. • Ref: compiled by [REDACTED], Archaeological Survey Unit, University College, Cork. 	Yes	Yes	This site will be avoided by distance of 20m. Prior to harvesting near this site, the Resource Manager will mark the site.
44	<ul style="list-style-type: none"> • Code: KE100-045 • Class: Children's burial ground • Townland: ARDEA • Coordinates: 477526, 562986 • Description: In pasture, on a N-facing slope overlooking Kenmare Bay. This burial ground occupies a triangular area (36m N-S; 20m E-W) defined by an earth and stone field boundary on its W side, by a low wall, covered by overgrowth, on its S side and by a low intermittent bank on its NE side. The graves are marked by low upright stones which are largely obscured by a dense overgrowth of ferns and briars. A grave-marker (H 0.55m; Wth 0.4m) in the S part of the burial ground is inscribed with a small cross and the date '1766' on its E face. • Ref: The above description is derived from the published 'Archaeological Inventory of County Kerry. Volume I: South-West Kerry' (Dublin: Stationery Office, 2009). 	Yes	No	Mitigation not required as site/monument is located inland.
45	<ul style="list-style-type: none"> • Code: KE101-003 • Class: Children's burial ground • Townland: FEORAMORE • Coordinates: 483856, 566822 	Yes	Yes	This site will be avoided by distance of 20m. Prior to harvesting near this site, the

No.	Site details (derived from www.archaeology.ie)	Zone of notification crosses foreshore?	Site present on/directly adjacent to foreshore?	Mitigation measure
	<ul style="list-style-type: none"> • Description: In pasture, on uneven ground, on the S shore of Kenmare Bay. An oblong area (20m E-W; 14m N-S) defined by an earth and gravel bank on the shore-side and by a drystone field wall on the S side; the E and W sides are open. Low uninscribed grave-markers are visible in the interior, some fallen and obscured by overgrowth. Trees grow within the burial ground. According to local information, Mass was celebrated here in 1999. • Ref: The above description is derived from the published 'Archaeological Inventory of County Kerry. Volume I: South-West Kerry' (Dublin: Stationery Office, 2009). 			Resource Manager will mark the site.
46	<ul style="list-style-type: none"> • Code: KE101-004 • Class: Church • Townland: Dinish Island • Coordinates: 486133, 567595 • Description: On a low flat-topped rise, on the E side of Dinish Island. The remains of this rectangular church (int. dims. 7.5m E-W; 3.52m N-S) consist of low ivy-clad drystone walls (T 0.92m; H c. 0.7m) which show evidence of rebuilding in several places. The featureless doorway (Wth 0.5m) is near the W end of the S wall. There is a cut-stone water spout (0.38m x 0.55m; D 0.05m) on top of the wall to the W of the entrance. The uneven surface of the interior is covered by low vegetation overgrowth and no grave-markers are evident. There are the remains of a low square structure (L 1.3m), an inserted feature, in the SE corner. According to local information, a well (KE101-004001-) c. 150m to the SE was associated with the church. • Ref: The above description is derived from the published 'Archaeological Inventory of County Kerry. Volume I: South-West Kerry' (Dublin: Stationery Office, 2009). 	Yes	No	Mitigation not required as site/monument is located inland.
47	<ul style="list-style-type: none"> • Code: KE101-004001 • Class: Well • Townland: Dinish Island • Coordinates: 486182, 567567 • Description: Adjacent to a house on Dinish Island and c. 60m to the SE of a church (KE101-004-). According to local information, this well, which is now closed in, was associated with the church. • Ref: The above description is derived from the published 'Archaeological Inventory of County Kerry. Volume I: South-West Kerry' (Dublin: Stationery Office, 2009). 	Yes	No	Mitigation not required as site/monument is located inland.
48	<ul style="list-style-type: none"> • Code: KE101-106 • Class: Standing stone • Townland: COORNAGILLAGH • Coordinates: 479682, 565252 • Description: In pasture, on an E-facing slope, at the E end of Ormond's Island. This standing stone (1.05m x 0.43m; H 1.02m), which narrows towards its apex, is subrectangular in plan and is orientated E-W. 	Yes	No	Mitigation not required as site/monument is located inland.

No.	Site details (derived from www.archaeology.ie)	Zone of notification crosses foreshore?	Site present on/directly adjacent to foreshore?	Mitigation measure
	<ul style="list-style-type: none"> • Ref: The above description is derived from the published 'Archaeological Inventory of County Kerry. Volume I: South-West Kerry' (Dublin: Stationery Office, 2009). 			
49	<ul style="list-style-type: none"> • Code: KE101-107 • Class: Standing stone • Townland: COORNAGILLAGH • Coordinates: 479504, 565258 • Description: In rough pasture, on a S-facing slope, in the centre of Ormond's Island. This standing stone (0.75m x 0.4m; H 1.42m) is subrectangular in plan and section and is orientated ENE-WSW. • Ref: The above description is derived from the published 'Archaeological Inventory of County Kerry. Volume I: South-West Kerry' (Dublin: Stationery Office, 2009). 	Yes	No	Mitigation not required as site/monument is located inland.
50	<ul style="list-style-type: none"> • Code: KE101-108 • Class: Boulder-burial • Townland: COORNAGILLAGH • Coordinates: 479080, 565070 • Description: In pasture, on a S-facing slope at the SW side of Ormond's Island in Kenmare Bay. A sandstone boulder (1.4m E-W; 1.15m N-S; T 0.55m), partially incorporated into a field boundary to the N, rests on at least three support-stones (H 0.5m at E; H 0.4m at W). The flat-topped upper surface of the boulder slopes down gently to the W. • Ref: The above description is derived from the published 'Archaeological Inventory of County Kerry. Volume I: South-West Kerry' (Dublin: Stationery Office, 2009). 	Yes	No	Mitigation not required as site/monument is located inland.
51	<ul style="list-style-type: none"> • Code: KE106-077001 • Class: Redundant record • Townland: ABBEY ISLAND • Coordinates: 452077, 558291 • Description: This record was formerly classed in the SMR (1990) and the RMP (1997) as an abbey. According to O'Sullivan and Sheehan (1996, 344-6, no. 1084), claims that the remains here are those of an Augustinian abbey which was a cell of Molana abbey in Co Waterford cannot be substantiated. • Ref: Compiled by: [REDACTED], Archaeological Survey Unit, University College, Cork. Date of upload: 30 May 2011 	Yes	No	Mitigation not required as site/monument is located inland.
52	<ul style="list-style-type: none"> • Code: KE106-077002 • Class: Graveyard • Townland: ABBEY ISLAND • Coordinates: 452074, 558301 	Yes	No	Mitigation not required as site/monument is located inland.

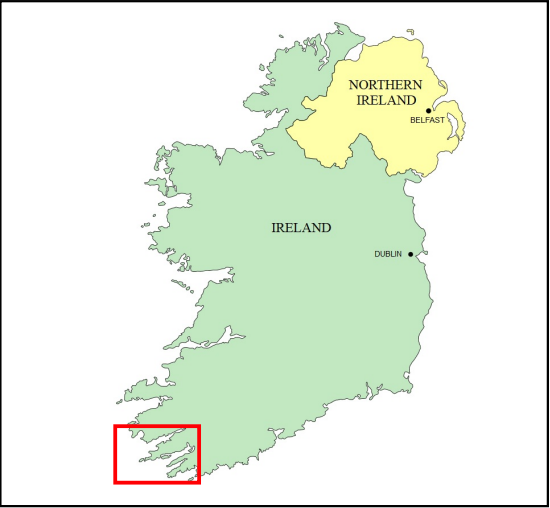
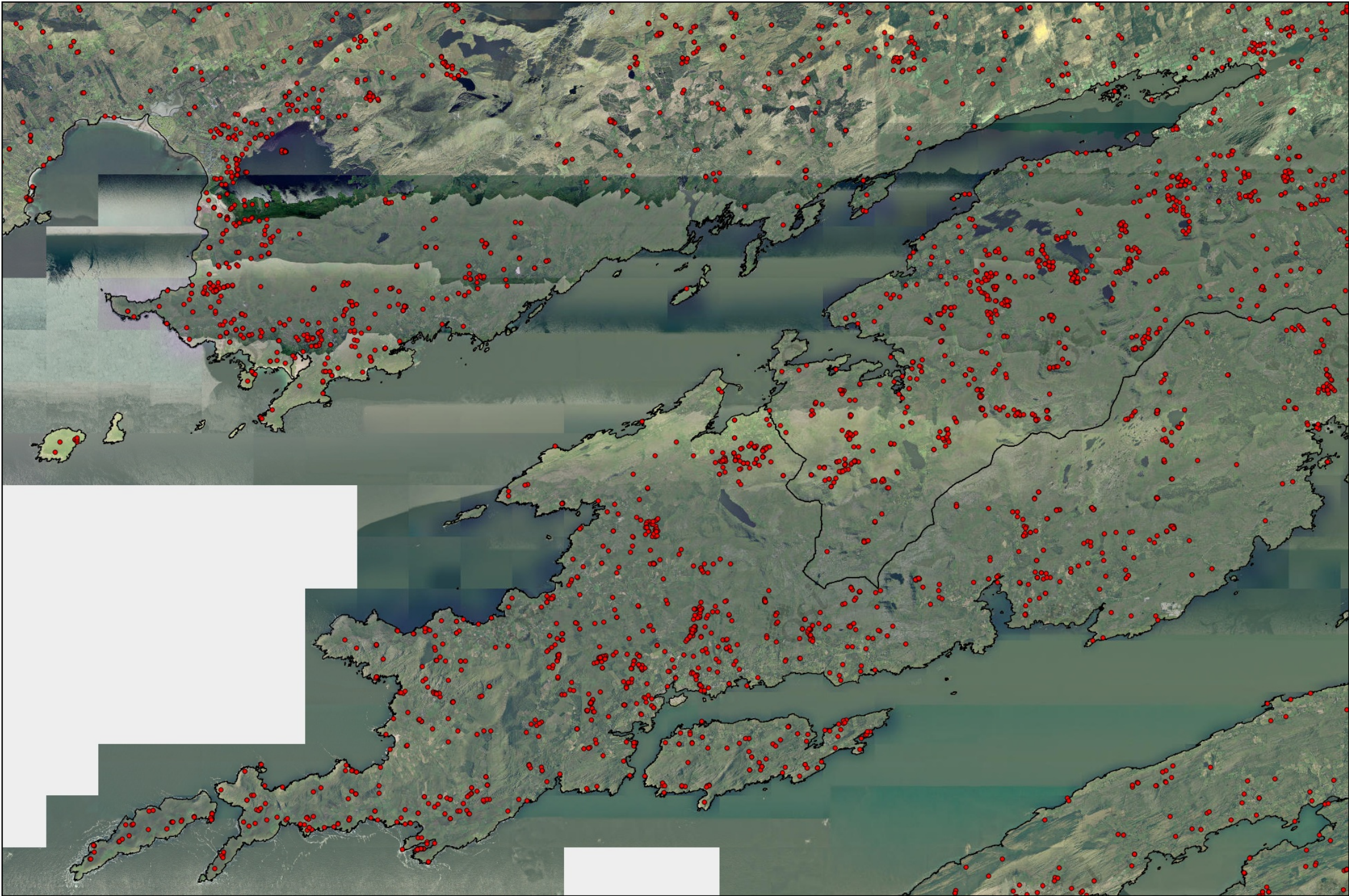
No.	Site details (derived from www.archaeology.ie)	Zone of notification crosses foreshore?	Site present on/directly adjacent to foreshore?	Mitigation measure
	<ul style="list-style-type: none"> • Description: Ahamore Abbey/Mainistir Achaidh Mhóir commonly called Derrynane Abbey, is situated in a roughly rectangular graveyard (KE106-077002-) on the NE edge of Abbey Island, on the W side of Derrynane Bay. Access to the island, which is 36ha in area, is gained by crossing a beach, though it is cut off from the mainland by certain high tides. The church is traditionally associated with St Finan (OSNB Kilcrohane, 38), though Smith notes an association with St Finbarr of Cork (1756, 94). The remains are reputedly those of an Augustinian abbey, which was regarded by Cox as a cell of Molana Abbey, Co. Waterford (in de Brún 1972, 36). This connection, however, cannot be substantiated. The site contains the family vault of the O'Connells of Darrynane and the grave of the eighteenth-century Gaelic poet, Tomás Rua Ó Suilleabháin. The site is annotated simply as 'Abbey' on the first edition of the OS map, where it is depicted as an unenclosed group of buildings. Extensive burials (KE106-077002-) in the church (KE106-077003-) have resulted in a considerable rise in internal ground level. A pile of rubble at the base of the E gable obscures an area of regular coursing, which may represent an altar. • Ref: The above description is derived from [REDACTED] (compilers), 'The Iveragh peninsula: an archaeological survey of South Kerry'. Cork University Press (1996), no. 1084. 			
53	<ul style="list-style-type: none"> • Code: KE106-077003 • Class: Church • Townland: ABBEY ISLAND • Coordinates: 452076, 558297 • Description: Ahamore Abbey/Mainistir Achaidh Mhóir: The ruins of these buildings, commonly called Derrynane Abbey, are situated in a roughly rectangular graveyard on the NE edge of Abbey Island, on the W side of Derrynane Bay. Access to the island, which is 36ha in area, is gained by crossing a beach, though it is cut off from the mainland by certain high tides. The church is traditionally associated with St Finan (OSNB Kilcrohane, 38), though Smith notes an association with St Finbarr of Cork (1756, 94). The remains are reputedly those of an Augustinian abbey, which was regarded by Cox as a cell of Molana Abbey, Co. Waterford (in de Brún 1972, 36). This connection, however, cannot be substantiated. The site contains the family vault of the O'Connells of Darrynane and the grave of the eighteenth-century Gaelic poet, Tomás Rua Ó Suilleabháin. Further site details can be obtained from www.archaeology.ie. • Ref: The above description is derived from [REDACTED] (compilers), 'The Iveragh peninsula: an archaeological survey of South Kerry'. Cork University Press (1996), no. 1084. 	Yes	No	Mitigation not required as site/monument is located inland.
54	<ul style="list-style-type: none"> • Code: KE106-129 • Class: Midden • Townland: ABBEY ISLAND • Coordinates: 451971, 558387 • Description: This small midden is exposed in section on the N shoreline of Abbey Island, on the W side of Darrynane Bay. Measuring 4m long and .2m in maximum thickness, it is composed of limpet and periwinkle shells in a band of dark brown, stony soil. It is overlain by .6m of sand (information: [REDACTED]). 	Yes	Yes	This site will be avoided by distance of 20m. Prior to harvesting near this site, the Resource Manager will mark the site.

No.	Site details (derived from www.archaeology.ie)	Zone of notification crosses foreshore?	Site present on/directly adjacent to foreshore?	Mitigation measure
	<ul style="list-style-type: none"> • Ref: The above description is derived from A. O'Sullivan and J. Sheehan (compilers), 'The Iveragh peninsula: an archaeological survey of South Kerry'. Cork University Press (1996), no. 1. 			
55	<ul style="list-style-type: none"> • Code: KE106-144 • Class: Mine - copper • Townland: AN RÁTH (Dún Cíaráin Theas) • Coordinates: 452314, 556634 • Description: A normally flooded trench in bedrock, 2m long by 0.6m wide at surface, gives access to a partially backfilled underground chamber approximately 2m high by 2m wide by 3.6m plus long. When flooded, the trench has the appearance of a peaty pool, completely concealing the workings. The spoil heap, roughly 20m square in area contains numerous examples of broken stone mining mauls. There is no obvious copper mineralisation present. • Ref: Compiled by: [REDACTED] Date of upload: 30 July 2015 	Yes	No	Mitigation not required as site/monument is located inland.
56	<ul style="list-style-type: none"> • Code: KE108-001 • Class: Burial ground • Townland: SHERKY ISLAND • Coordinates: 468772, 561609 • Description: Grave Yard: This site is indicated on the first edition of the OS map as a rectangular area and is marked only as 'site of' on the second edition. It was located close to the cliff-edge on the N coast of the Sherky island. No surface trace survives. • Ref: The above description is derived from [REDACTED] (compilers), 'The Iveragh peninsula: an archaeological survey of South Kerry'. Cork University Press (1996), no. 1049. 	Yes	Yes	This site will be avoided by distance of 20m. Prior to harvesting near this site, the Resource Manager will mark the site.
57	<ul style="list-style-type: none"> • Code: KE108-005 • Class: Fish palace • Townland: KILMAKILLOGE • Coordinates: 475374, 560242 • Description: At the N side of the road at Kilmakilloge Pier. The Marquis of Lansdowne, writing in 1937, states that 'a pallice was still in existence though not in use at Bunaw in recent times' (Went 1946, 150). This is probably one of the 'fish houses' indicated on a map of Kilmakilloge Harbour in Smith (1756, 74). According to local information, the ruined walls of the fish palace stood at the roadside until recently, a modern house now stands on the site and there are no visible remains of the fish palace. • Ref: The above description is derived from the published 'Archaeological Inventory of County Kerry. Volume I: South-West Kerry' (Dublin: Stationery Office, 2009). 	Yes	Yes	This site will be avoided by distance of 20m. Prior to harvesting near this site, the Resource Manager will mark the site.
58	<ul style="list-style-type: none"> • Code: KE108-009 • Class: Souterrain • Townland: DERREEN (Glanarought By.) 	Yes	No	Mitigation not required as site/monument is located inland.

No.	Site details (derived from www.archaeology.ie)	Zone of notification crosses foreshore?	Site present on/directly adjacent to foreshore?	Mitigation measure
	<ul style="list-style-type: none"> • Coordinates: 476660, 558944 • Description: In a wooded area, on Grinneen Island near the SE shore of Kilmakilloge Harbour. A partly blocked entrance (L 0.6m; H 0.2m) is situated 0.9m below ground level on the W side of a path leading to the seashore. A local person pointed out the location of a second entrance beside a tree, 9m to the NW. The latter entrance is now blocked with debris. The underground passage between the entrances is earth-cut with a curving roof and was, according to local information, used in the past by smugglers. According to the Marquis of Lansdowne, it was possible to 'sit up' in the passage (Lansdowne 1937, 161). • Ref: The above description is derived from the published 'Archaeological Inventory of County Kerry. Volume I: South-West Kerry' (Dublin: Stationery Office, 2009). 			
59	<ul style="list-style-type: none"> • Code: KE108-012 • Class: Enclosure • Townland: COLLORUS • Coordinates: 473405, 558643 • Description: In rough pasture, on a N-facing slope near the S shore of Kilmakilloge Harbour. A circular area (4.2m E-W; 4m N-S) defined by a drystone wall (T 0.5m; H 0.4m at E). The lower courses of the wall consist of large stones which protrude above the blanket bog. Some of these lower course stones are set upright at right angles to the line of the wall S-SW. Smaller stones from the collapsed upper courses are scattered in the interior and downslope externally to the N and NW. Outcropping rock forms most of the internal ground surface. There is further outcropping rock on the downslope externally to the N and NW. • Ref: The above description is derived from the published 'Archaeological Inventory of County Kerry. Volume I: South-West Kerry' (Dublin: Stationery Office, 2009). 	Yes	No	Mitigation not required as site/monument is located inland.

4. Map

Map 1: Distribution of archaeological sites in Kenmare and surrounding areas (see next page).




Location map

Legend

- Archeological sites

Cartography

Map adapted from Ordnance Survey of Ireland and Archaeological Survey of Ireland.
Data from sites and monuments records (SMR) was accessed through Ireland's National Monuments Service - Archaeological Survey of Ireland (Published by: Department of Housing, Local Government, and Heritage), using the Historic Environment Viewer (<https://maps.archaeology.ie/HistoricEnvironment/>, accessed in April 2022.
© Government of Ireland; content is owned and operated by National Monuments Service, Government of Ireland. Basemaps: © Ordnance Survey Ireland (Licence No OSI-NMA-14) and DigitalGlobe, Inc. (<https://maps.archaeology.ie/historicenvironment/help.html>).

PREPARED BY				TITLE	ARCHAEOLOGICAL SITES	
	PROJECT	Kenmare Bay: Application to sustainably hand harvest Ascophyllum nodosum		DATE	02-JUL-2024	
Revision: A				DRAWING NUMBER		
				HRVST-KMRE-A-00217		