

MARESCONNECT INTERCONNECTOR
MARITIME USAGE LICENCE

FISH & FISHING ACTIVITY
Fish Spawning and Nursery Areas (Sheet 1 of 2)

Drawing No: P2578M-FISH-002

A

Legend

Maritime Usage Area

Administrative Boundaries

12nm Territorial Sea Limit

EEZ Boundary

CEFAS Nursery Grounds (2010)

Anglerfish

Cod

Mackerel

Plaice

Sandeel

Spotted ray

Spurdog

Thornback ray

Tope shark

Whiting

CEFAS Spawning Grounds (2010)

Cod

Hake

HorseMackerel

Ling

Mackerel

Plaice

Sandeel

Sole

Whiting

NOTE: Not to be used for Navigation

Date	26 April 2024
Coordinate System	IRENET95 Irish Transverse Mercator
Projection	Transverse Mercator
Datum	IRENET95
Data Source	DECC; CEFAS; MII; GEBCO; ESRI
File Reference	J:\P2578\Mxd_QGZ\00_OffshoreIreland\11_FISH\ P2578M-FISH-002.mxd
Created By	
Reviewed By	
Approved By	

maresconnect

intertek

0

10

20

30

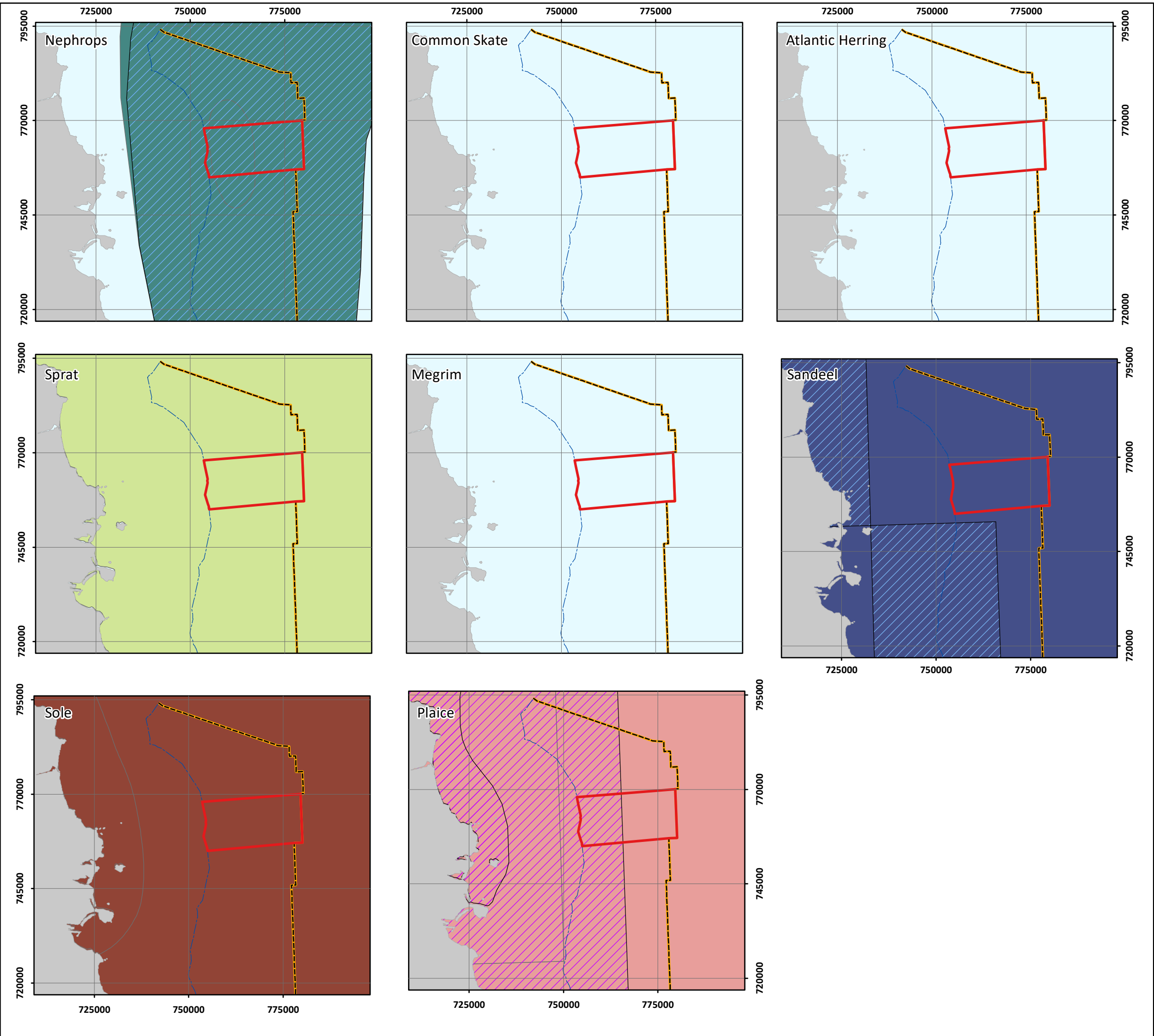
40

km

© Metoc Ltd, 2019.

All rights reserved.

© Copyright Department of the Environment, Climate and Communicationst (DECC); Contains data published by Marine Institute Ireland (MII) licensed under Creative Commons Attribution 4.0; © The GEBCO Digital Atlas published by the British Oceanographic Data Centre on behalf of IOC and IHO, 2003; Contains public sector information licensed under Open Government Licence v3.0. Data from Ellis, J.R. et al. (2012) Spawning and Nursery Grounds of Selected Fish Species in UK Waters. CEFAS Lowestoft Science Series Technical Report, 147: 55pp.; ©Esri



MARESCONNECT INTERCONNECTOR
MARITIME USAGE LICENCE

FISH & FISHING **ACTIVITY**
Fish Spawning and Nursery Areas (Sheet 2 of 2)

Drawing No: P2578M-FISH-003

A

Legend

Maritime Usage Area

Administrative Boundaries

12nm Territorial Sea Limit

EEZ Boundary

CEFAS Nursery Grounds (2010)

Herring

Plaice

Sand Eel

CEFAS Spawning Grounds (1998)

Nephrops

Plaice

Sole

Sprat

CEFAS Nursery Grounds (1998)

Nephrops

Whiting

CEFAS Spawning Grounds

Plaice

Sandeel

Sole

NOTE: Not to be used for Navigation

Date	26 April 2024
Coordinate System	IRENET95 Irish Transverse Mercator
Projection	Transverse Mercator
Datum	IRENET95
Data Source	DECC; CEFAS; MII; ESRI; GEBCO
File Reference	J:\P2578\Mxd_QGZ\00_OffshoreIreland\11_FISH\ P2578M-FISH-003.mxd
Created By	
Reviewed By	
Approved By	

maresconnect

intertek

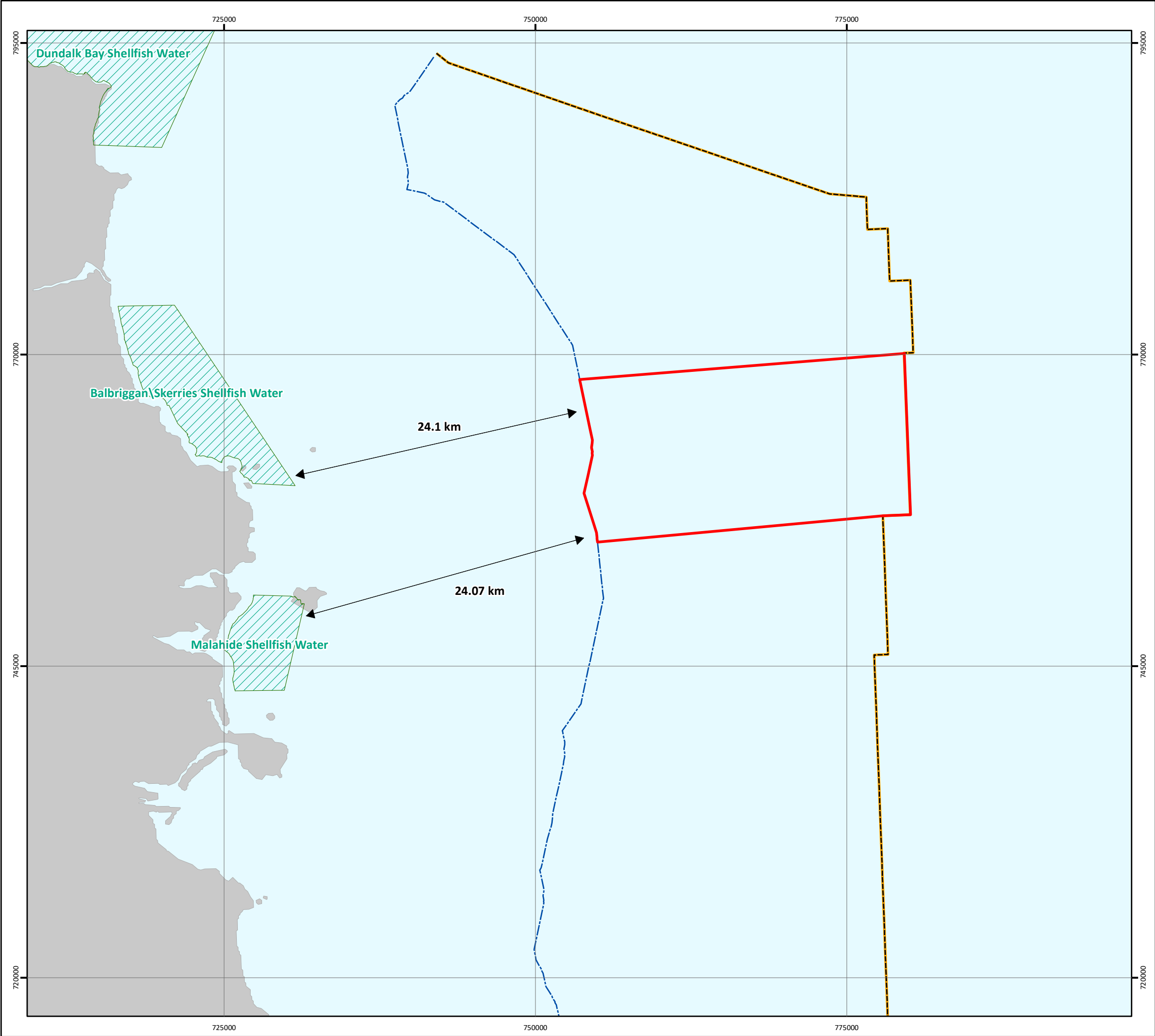
010203040

km

© Metoc Ltd, 2019.

All rights reserved.

© Copyright Department of the Environment, Climate and Communicationst (DECC); Contains data published by Marine Institute Ireland (MII) licensed under Creative Commons Attribution 4.0; © The GEBCO Digital Atlas published by the British Oceanographic Data Centre on behalf of IOC and IHO, 2003; Contains public sector information licensed under Open Government Licence v3.0. Data from Ellis, J.R. et al. (2012) Spawning and Nursery Grounds of Selected Fish Species in UK Waters. CEFAS Lowestoft Science Series Technical Report, 147: 55pp.; ©Esri



MARESCONNECT INTERCONNECTOR
MARITIME USAGE LICENCE
FISH & FISHING ACTIVITY
Shellfish Waters

Drawing No: P2578M-FISH-007

A

Legend

Maritime Usage Area

Designated Shellfish Water

Administrative Boundaries

12 NM Territorial Sea Limit

EEZ Boundary

N

W

E

S

NOTE: Not to be used for Navigation

Date	13 May 2024
Coordinate System	IRENET95 Irish Transverse Mercator
Projection	Transverse Mercator
Datum	IRENET95
Data Source	GEBCO; ESRI, MaresConnect, DECC, MII
File Reference	J:\P2578\Mxd_QGZ\00_OffshoreIreland\11_FISH\ P2578M-FISH-007.mxd
Created By	<div></div>
Reviewed By	
Approved By	

maresconnect

intertek

0

2

4

6

8

km

© Metoc Ltd, 2024

All rights reserved.

© Esri; © Copyright Department of the Environment, Climate and Communications (DECC); Data created by Marine Institute for Irelands Marine Atlas based on Straight Baselines Survey 2016 © Copyright Marine Institute 2018; © The GEBCO Digital Atlas published by the British Oceanographic Data Centre on behalf of IOC and IHO, 2003.