

Assessment, Research and Data Unit Appropriate Assessment Screening and Determination Report			
To:	John, Evans, Director of Assessment, Research and Data		
From:	Suzanne Wylde, Senior Marine Advisor		
Date of Report:	1 st May 2025	Maritime Usage Licence Application No:	MUL230034
Applicant:	Codling Wind Park Limited (CWPL)		
Licence application received:	24 th May 2024		
Type of maritime usage in accordance with Schedule 7 of the Maritime Area Planning Act, 2021 (as amended):	Marine environmental surveys for the purposes of site investigation or in support of an application under Part XXI of the Act of 2000		
Location of proposed Maritime Usage:	The Irish Sea off the coast of counties Dublin and Wicklow. The proposed licence area also includes two smaller areas for a potential operation and maintenance base (Wicklow Harbour) and an area for a potential onshore substation (northern shore of Poolbeg Peninsula, Dublin).		

Background

Codling Wind Park Ltd has applied to MARA for a maritime usage licence. This licence application is subject to screening for appropriate assessment to determine if it alone, or in combination with other plans or projects, is likely to cause significant effects to a European site(s) in view of the conservation objectives of the site(s).

The applicant submitted a Supporting Information for Screening of Appropriate Assessment (SISAA) report and an Assessment of Impacts of the Maritime Usage (AIMU) Report in support of their licence application.

Description of Project/Proposal and local site characteristics

The proposed Marine Usage Licence area primarily takes up an expanse of 476km² in the Irish Sea for the proposed windfarm array. In addition, the proposed licence area includes two smaller areas for a potential operation and maintenance base (Wicklow Harbour) and an area for a potential onshore substation (northern shore of Poolbeg Peninsula, Dublin).

The applicant has applied for a licence term of five years. The purpose of the proposed maritime usage is data gathering. The site investigations are required to better understand the seabed characteristics and geotechnical make up across the offshore site.

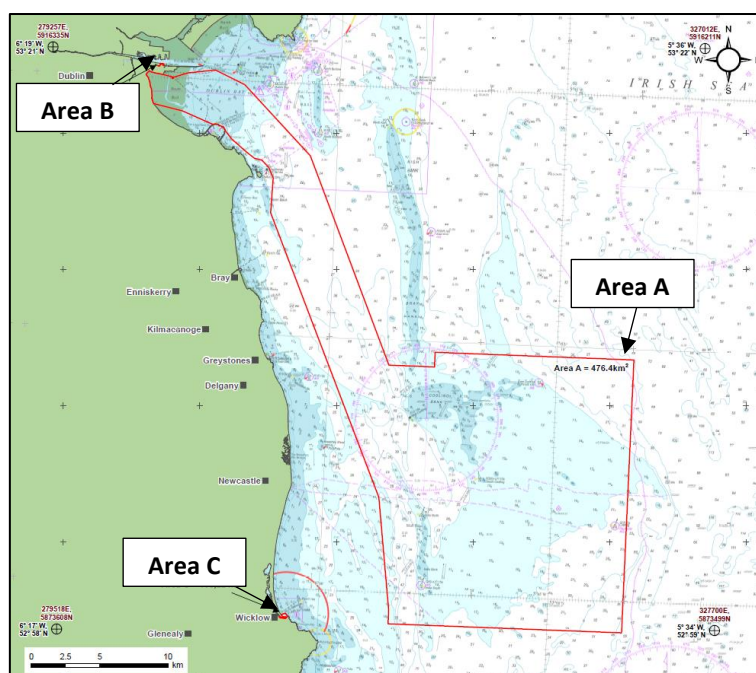


Figure 1: Map showing Areas A, B and C proposed Marine Usage Licence Areas.

The applicant provided detailed information in relation to the proposed maritime usage as part of their licence application. The proposed marine environmental surveys are summarised in Table 1 below.

Table 1: Proposed marine environmental surveys and the estimated duration.

Proposed activity	Estimated duration
Metocean Surveys – floating LiDAR, wave buoys or metocean buoys and acoustic Doppler current profilers	12 – 36 months (fixed in location)
Geotechnical surveys – boreholes, cone penetration tests, vibrocores and trial pits	2 – 8 months (multiple times – max 3 days per survey)
Geophysical and unexploded ordnance surveys – side scan sonar, multibeam echo-sounder, magnetometers, sub-bottom profiler, high resolution acoustic seismic surveys (e.g. sparkers).	4 – 6 months (multiple times – 10-90 days each)
Fish and shellfish surveys – potting and trawl surveys	2 months (May – September)
Benthic and intertidal surveys – grab samples (array area and proposed cable route (~100), Wicklow Harbour (~10)) and ecological intertidal walkover survey and epi-benthic trawls	3 - 6 weeks
Marine Mammal passive acoustic monitoring	12 -36 months (fixed)
Intertidal archaeology walkover survey	Periodically once a year for the 5 years

The seabed substrate in the main body of the survey areas consists mainly of coarse sediment and some sand. The intertidal and nearshore areas, of the proposed maritime area are comprised of mud and sand. The proposed surveys will further determine this information.

Identification of relevant Natura 2000 sites using Source-Pathway-Receptor Model and compilation of information on qualifying interests and conservation objectives.

The proposed maritime usage activities are not directly connected with or necessary to the management of any European site(s). The European sites listed on Table 2 have been screened in for appropriate assessment, given the nature, extent and duration of the proposed site investigation activities, the conservation objectives of the European sites and where a Source-Pathway-Receptor (SPR) link exists between the proposed activities and the European sites.

Table 2: List of Special Areas of Conservation and Special Protection Areas considered in the appropriate assessment screening process.

European Site Code ¹²	Distance from the Proposed MUL Area (km)	List of Qualifying Interests	Connections (Source - Pathway - Receptors)	Qualifying Interests considered further in Screening Y/N	European Site Screened in for Stage 2 Appropriate Assessment	Site Conservation Objectives
Rockabill to Dalkey SAC (Site Code IE003000)	Within MUL area	Reefs [1170]	No	No	Yes	NPWS, 2013 Conservation Objectives: Rockabill to Dalkey Island SAC 003000. Version 1. National Parks and Wildlife Service, Department of Arts, Heritage and the Gaeltacht
		<i>Phocoena phocoena</i> (Harbour Porpoise) [1351]	Yes – possible foraging	Yes – possible disturbance from underwater noise; water quality deterioration from accidental incidents with survey vessels		
South Dublin Bay SAC (Site Code IE000210)	Within MUL area	Mudflats and sandflats not covered by sea-water at low tide [1140] Annual vegetation of drift lines [1210] Salicornia and other annuals colonising mud and sand [1310] Embryonic shifting dunes [2110]	Yes	Yes – possible water quality deterioration from accidental incidents with survey vessels	Yes	NPWS (2013) Conservation Objectives: South Dublin Bay SAC 000210. Version 1. National Parks and Wildlife Service, Department of Arts, Heritage and the Gaeltacht.

¹ The Qualifying Interests (QI's) highlighted in **bold text** are screened in for Stage 2 Appropriate Assessment.

² For international Natura sites, only Qualifying Interest species that are screened in for Stage 2 Appropriate Assessment have been listed.

European Site Code ¹²	Distance from the Proposed MUL Area (km)	List of Qualifying Interests	Connections (Source - Pathway - Receptors)	Qualifying Interests considered further in Screening Y/N	European Site Screened in for Stage 2 Appropriate Assessment	Site Conservation Objectives
Wicklow Reef SAC (Site code IE002274)	Adjoining MUL area	Reefs [1170]	No	No	No	NPWS (2013) Conservation Objectives: Wicklow Reef SAC 002274. Version 1. National Parks and Wildlife Service, Department of Arts, Heritage and the Gaeltacht.
North Dublin Bay SAC (Site Code IE000206)	<10km	Mudflats and sandflats not covered by seawater at low tide [1140] Annual vegetation of drift lines [1210] Salicornia and other annuals colonising mud and sand [1310] Atlantic salt meadows (<i>Glauco-Puccinellietalia maritima</i>) [1330] Mediterranean salt meadows (<i>Juncetalia maritimi</i>) [1410] Embryonic shifting dunes [2110] Shifting dunes along the shoreline with <i>Ammophila arenaria</i> (white dunes) [2120] Fixed coastal dunes with herbaceous vegetation (grey dunes) [2130] Humid dune slacks [2190] <i>Petalophyllum ralfsii</i> (Petalwort) [1395]	No	No	No	NPWS (2013) Conservation Objectives: North Dublin Bay SAC 000206. Version 1. National Parks and Wildlife Service, Department of Arts, Heritage and the Gaeltacht.
Howth Head SAC (Site Code IE000202)	<10km	Vegetated sea cliffs of the Atlantic and Baltic coasts [1230] European dry heaths [4030]	No	No	No	NPWS (2016) Conservation Objectives: Howth Head SAC 000202. Version 1. National Parks and Wildlife Service, Department of Arts, Heritage, Regional,

European Site Code ¹²	Distance from the Proposed MUL Area (km)	List of Qualifying Interests	Connections (Source - Pathway - Receptors)	Qualifying Interests considered further in Screening Y/N	European Site Screened in for Stage 2 Appropriate Assessment	Site Conservation Objectives
						Rural and Gaeltacht Affairs
Ireland's Eye SAC (Site Code IE002193)	<10km	Perennial vegetation of stony banks [1220] Vegetated sea cliffs of the Atlantic and Baltic coasts [1230]	No	No	No	NPWS (2017) Conservation Objectives: Ireland's Eye SAC 002193. Version 1. National Parks and Wildlife Service, Department of Arts, Heritage, Regional, Rural and Gaeltacht Affairs.
Codling Fault Zone SAC (Site code IE003015)	10 - 25km	Submarine structures made by leaking gases [1180]	No	No	Yes	NPWS (2025) Conservation Objectives: Codling Fault Zone SAC 003015. Version 2. National Parks and Wildlife Service, Department of Housing, Local Government and Heritage.
		<i>Phocoena phocoena</i> (Harbour Porpoise) [1351]	Yes - possible foraging	Yes – possible disturbance from underwater noise		
Baldoyle Bay SAC (Site Code IE000199)	10 - 25km	Mudflats and sandflats not covered by seawater at low tide [1140] Salicornia and other annuals colonising mud and sand [1310] Atlantic salt meadows (<i>Glaucopuccinellietalia maritima</i>) [1330] Mediterranean salt meadows (<i>Juncetalia maritimi</i>) [1410]	No	No	No	NPWS (2012) Conservation Objectives: Baldoyle Bay SAC 000199. Version 1.0. National Parks and Wildlife Service, Department of Arts, Heritage and the Gaeltacht

European Site Code ¹²	Distance from the Proposed MUL Area (km)	List of Qualifying Interests	Connections (Source - Pathway - Receptors)	Qualifying Interests considered further in Screening Y/N	European Site Screened in for Stage 2 Appropriate Assessment	Site Conservation Objectives
Malahide estuary SAC (Site Code IE 000205)	10 - 25km	Mudflats and sandflats not covered by seawater at low tide [1140] Salicornia and other annuals colonising mud and sand [1310] Atlantic salt meadows (<i>Glauco-Puccinellietalia maritima</i>) [1330] Mediterranean salt meadows (<i>Juncetalia maritimi</i>) [1410] Shifting dunes along the shoreline with <i>Ammophila arenaria</i> (white dunes) [2120] Fixed coastal dunes with herbaceous vegetation (grey dunes) [2130]	No	No	No	NPWS (2013) Conservation Objectives: Malahide Estuary SAC 000205. Version 1. National Parks and Wildlife Service, Department of Arts, Heritage and the Gaeltacht
Lambay Island SAC (Site Code IE000204)	10 – 25km	Reefs [1170] Vegetated sea cliffs of the Atlantic and Baltic coasts [1230]	No	No	Yes	NPWS (2024) Conservation Objectives: Lambay Island SAC 000204. Version 2. National Parks and Wildlife Service, Department of Housing, Local Government and Heritage.
		<i>Halichoerus grypus</i> (Grey Seal) [1364] <i>Phoca vitulina</i> (Harbour Seal) [1365] <i>Phocoena phocoena</i> (Harbour Porpoise) [1351]	Yes - possible foraging	Yes – possible disturbance from underwater noise		
Rogerstown Estuary SAC (Site code IE000208)	10 – 25km	Estuaries [1130] Mudflats and sandflats not covered by seawater at low tide [1140] Salicornia and other annuals colonising mud and sand [1310] Atlantic salt meadows (<i>Glauco-Puccinellietalia maritima</i>) [1330] Mediterranean salt meadows (<i>Juncetalia maritimi</i>) [1410]	No	No	No	NPWS (2013) Conservation Objectives: Rogerstown Estuary SAC 000208. Version 1. National Parks and Wildlife Service, Department of Arts, Heritage and the Gaeltacht.

European Site Code ¹²	Distance from the Proposed MUL Area (km)	List of Qualifying Interests	Connections (Source - Pathway - Receptors)	Qualifying Interests considered further in Screening Y/N	European Site Screened in for Stage 2 Appropriate Assessment	Site Conservation Objectives
		Shifting dunes along the shoreline with <i>Ammophila arenaria</i> (white dunes) [2120] Fixed coastal dunes with herbaceous vegetation (grey dunes) [2130]				
Blackwater Bank SAC [Site code IE002953]	50 – 75km	Sandbanks which are slightly covered by sea water all the time [1110]	No	No	Yes	NPWS (2024) Conservation Objectives: Blackwater Bank SAC 002953. Version 3. National Parks and Wildlife Service, Department of Housing, Local Government and Heritage.
		<i>Phocoena phocoena</i> (Harbour Porpoise) [1351]	Yes - possible foraging	Yes – possible disturbance from underwater noise		
River Boyne and River Blackwater SAC [Site code IE002299]	50-75km	Alkaline fens [7230] Alluvial forests with <i>Alnus glutinosa</i> and <i>Fraxinus excelsior</i> (Alno-Padion, Alnion incanae, Salicion albae) [91E0] <i>Lampetra fluviatilis</i> (River Lamprey) [1099] <i>Salmo salar</i> (Salmon) [1106] <i>Lutra lutra</i> (Otter) [1355]	No	No	No	NPWS (2021) Conservation Objectives: River Boyne and River Blackwater SAC 002299. Version 1. National Parks and Wildlife Service, Department of Housing, Local Government and Heritage.
Carnsore Point SAC [Site code IE002269]	75 – 100km	Mudflats and sandflats not covered by seawater at low tide [1140] Reefs [1170]	No	No	Yes	NPWS (2024) Conservation Objectives: Carnsore Point SAC 002269. Version 2. National Parks and Wildlife Service, Department of
		<i>Phocoena phocoena</i> (Harbour Porpoise) [1351]	Yes - possible foraging	Yes – possible disturbance from underwater noise		

European Site Code ¹²	Distance from the Proposed MUL Area (km)	List of Qualifying Interests	Connections (Source - Pathway - Receptors)	Qualifying Interests considered further in Screening Y/N	European Site Screened in for Stage 2 Appropriate Assessment	Site Conservation Objectives
						Housing, Local Government and Heritage.
Slaney River Valley SAC [Site code IE000781]	75 – 100km	Estuaries [1130] Mudflats and sandflats not covered by seawater at low tide[1140] Atlantic salt meadows (<i>Glauco-Puccinellietalia maritima</i>)[1330] Mediterranean salt meadows (<i>Juncetalia maritimi</i>) [1410] Water courses of plain to montane levels with the Ranunculion fluitantis and Callitricho-Batrachion vegetation [3260] Old sessile oakwoods with Ilex and Blechnum in the BritishIsles[91A0] Alluvial forests with <i>Alnus glutinosa</i> and <i>Fraxinus excelsior</i> (Alno-Padion, Alnionincanae, Salicionalbae)[91E0] <i>Margaritifera margaritifera</i> (Freshwater Pearl Mussel) [1029] <i>Petromyzon marinus</i> (Sea Lamprey) [1095] <i>Lampetra planeri</i> (Brook Lamprey) [1096] <i>Lampetra fluviatilis</i> (River Lamprey) [1099] <i>Alosa fallax fallax</i> (Twaite Shad) [1103] <i>Salmo salar</i> (Salmon) [1106] <i>Lutra lutra</i> (Otter) [1355]	No	No	Yes	NPWS (2011) Conservation Objectives: Slaney River Valley SAC 000781. Version 1.0. National Parks and Wildlife Service, Department of Arts, Heritage and the Gaeltacht
		<i>Phoca vitulina</i> (Harbour Seal) [1365]	Yes – within foraging range for Harbour Seal	Yes – possible disturbance from underwater noise		

European Site Code ¹²	Distance from the Proposed MUL Area (km)	List of Qualifying Interests	Connections (Source - Pathway - Receptors)	Qualifying Interests considered further in Screening Y/N	European Site Screened in for Stage 2 Appropriate Assessment	Site Conservation Objectives
Saltee Islands SAC [Site code IE0007071]	>100km	Mudflats and sandflats not covered by seawater at low tide [1140] Large shallow inlets and bays [1160] Reefs [1170] Vegetated sea cliffs of the Atlantic and Baltic coasts [1230] Submerged or partially submerged sea caves [8330] <i>Halichoerus grypus</i> (Grey Seal) [1364]	No	No	No	NPWS (2011) Conservation Objectives: Saltee Islands SAC 000707 and Saltee Islands SPA 004002. Version 1.0. National Parks and Wildlife Service, Department of Arts, Heritage and the Gaeltacht
Hook Head SAC [Site code IE000764]	>100km	Large shallow inlets and bays [1160] Reefs [1170] Vegetated sea cliffs of the Atlantic and Baltic coasts [1230]	No	No	Yes	NPWS (2025) Conservation Objectives: Hook Head SAC 000764. Version 2. National Parks and Wildlife Service, Department of Housing, Local Government and Heritage.
		<i>Tursiops truncatus</i> (Common Bottlenose Dolphin) [1349] <i>Phocoena phocoena</i> (Harbour Porpoise) [1351]	Yes - possible foraging	Yes – possible disturbance from underwater noise		
South Dublin Bay and River Tolka SPA (Site IE004024)	Within site boundary	Light-bellied Brent Goose (<i>Branta bernicla hrota</i>) [A046] Oystercatcher (<i>Haematopus ostralegus</i>) [A130] Ringed Plover (<i>Charadrius hiaticula</i>) [A137] Grey Plover (<i>Pluvialis squatarola</i>) [A141] Knot (<i>Calidris canutus</i>) [A143] Sanderling (<i>Calidris alba</i>) [A144] Dunlin (<i>Calidris alpina</i>) [A149] Bar-tailed Godwit (<i>Limosa lapponica</i>) [A157] Redshank (<i>Tringa totanus</i>) [A162]	Yes	Yes – possible above and under water noise disturbance, visual disturbance, habitat disturbance; water quality deterioration from accidental incidents with survey vessels	Yes	NPWS (2015) Conservation Objectives: South Dublin Bay and River Tolka Estuary SPA 004024. Version 1. National Parks and Wildlife Service, Department of Arts, Heritage and the Gaeltacht.

European Site Code ¹²	Distance from the Proposed MUL Area (km)	List of Qualifying Interests	Connections (Source - Pathway - Receptors)	Qualifying Interests considered further in Screening Y/N	European Site Screened in for Stage 2 Appropriate Assessment	Site Conservation Objectives
		Black-headed Gull (<i>Chroicocephalus ridibundus</i>) [A179] Roseate Tern (<i>Sterna dougallii</i>) [A192] Common Tern (<i>Sterna hirundo</i>) [A193] Arctic Tern (<i>Sterna paradisaea</i>) [A194] Wetland and Waterbirds [A999]				
The Murrough SPA (Site code: 004186)	Within site boundary	Red-throated Diver (<i>Gavia stellata</i>) [A001] Greylag Goose (<i>Anser anser</i>) [A043] Light-bellied Brent Goose (<i>Branta bernicla hrota</i>) [A046] Wigeon (<i>Anas penelope</i>) [A050] Teal (<i>Anas crecca</i>) [A052] Little Tern (<i>Sterna albifrons</i>) [A195] Wetland and Waterbirds [A999] Black-headed Gull (<i>Chroicocephalus ridibundus</i>) [A179] Herring Gull (<i>Larus argentatus</i>) [A184]	Yes	Yes – possible above and under water noise disturbance, visual disturbance; water quality deterioration from accidental incidents with survey vessels	Yes	NPWS (2024) Conservation Objectives: The Murrough SPA 004186. Version 1. National Parks and Wildlife Service, Department of Housing, Local Government and Heritage.
North Bull Island SPA (Site Code IE004006)	<10km	Light-bellied Brent Goose (<i>Branta bernicla hrota</i>) [A046] Shelduck (<i>Tadorna tadorna</i>) [A048] Teal (<i>Anas crecca</i>) [A052] Pintail (<i>Anas acuta</i>) [A054] Shoveler (<i>Anas clypeata</i>) [A056] Oystercatcher (<i>Haematopus ostralegus</i>) [A130] Golden Plover (<i>Pluvialis apricaria</i>) [A140] Grey Plover (<i>Pluvialis squatarola</i>) [A141] Knot (<i>Calidris canutus</i>) [A143] Sanderling (<i>Calidris alba</i>) [A144] Dunlin (<i>Calidris alpina</i>) [A149] Black-tailed Godwit (<i>Limosa limosa</i>) [A156] Bar-tailed Godwit (<i>Limosa lapponica</i>) [A157] Curlew (<i>Numenius arquata</i>) [A160] Redshank (<i>Tringa totanus</i>) [A162]	Yes	Yes – possible above and under water noise disturbance, visual disturbance	Yes	NPWS (2015) Conservation Objectives: North Bull Island SPA 004006. Version 1. National Parks and Wildlife Service, Department of Arts, Heritage and the Gaeltacht.

European Site Code ¹²	Distance from the Proposed MUL Area (km)	List of Qualifying Interests	Connections (Source - Pathway - Receptors)	Qualifying Interests considered further in Screening Y/N	European Site Screened in for Stage 2 Appropriate Assessment	Site Conservation Objectives
		Turnstone (<i>Arenaria interpres</i>) [A169] Black-headed Gull (<i>Chroicocephalus ridibundus</i>) [A179] Wetland and Waterbirds [A999]				
North West Irish Sea SPA (Site Code IE004236)	<10km	Red-throated Diver (<i>Gavia stellata</i>) [A001] Great Northern Diver (<i>Gavia immer</i>) [A003] Fulmar (<i>Fulmarus glacialis</i>) [A009] Manx Shearwater (<i>Puffinus puffinus</i>) [A013] Cormorant (<i>Phalacrocorax carbo</i>) [A017] Shag (<i>Phalacrocorax aristotelis</i>) [A018] Common Scoter (<i>Melanitta nigra</i>) [A065] Little Gull (<i>Larus minutus</i>) [A177] Black-headed Gull (<i>Chroicocephalus ridibundus</i>) [A179] Common Gull (<i>Larus canus</i>) [A182] Lesser Black-backed Gull (<i>Larus fuscus</i>) [A183] Herring Gull (<i>Larus argentatus</i>) [A184] Great Black-backed Gull (<i>Larus marinus</i>) [A187] Kittiwake (<i>Rissa tridactyla</i>) [A188] Roseate Tern (<i>Sterna dougallii</i>) [A192] Common Tern (<i>Sterna hirundo</i>) [A193] Arctic Tern (<i>Sterna paradisaea</i>) [A194] Little Tern (<i>Sterna albifrons</i>) [A195] Guillemot (<i>Uria aalge</i>) [A199] Razorbill (<i>Alca torda</i>) [A200] Puffin (<i>Fratercula arctica</i>) [A204]	Yes	Yes – possible above and under water noise disturbance, visual disturbance	Yes	NPWS (2023) Conservation Objectives: North-west Irish Sea SPA 004236. Version 1. National Parks and Wildlife Service, Department of Housing, Local Government and Heritage.
Howth Head Coast SPA (Site Code IE004113)	<10km	Kittiwake (<i>Rissa tridactyla</i>) [A188]	Yes	Yes – possible disturbance from above and under water noise, visual disturbance	Yes	NPWS (2024) Conservation Objectives: Howth Head Coast SPA 004113. Version 1. National Parks and Wildlife Service, Department of

European Site Code ¹²	Distance from the Proposed MUL Area (km)	List of Qualifying Interests	Connections (Source - Pathway - Receptors)	Qualifying Interests considered further in Screening Y/N	European Site Screened in for Stage 2 Appropriate Assessment	Site Conservation Objectives
						Housing, Local Government and Heritage
Ireland's Eye SPA (Site Code IE004117)	<10km	Herring Gull (<i>Larus argentatus</i>) [A184] Kittiwake (<i>Rissa tridactyla</i>) [A188] Cormorant (<i>Phalacrocorax carbo</i>) [A017] Guillemot (<i>Uria aalge</i>) [A199] Razorbill (<i>Alca torda</i>) [A200]	Yes	Yes – possible disturbance from above and under water noise, visual disturbance	Yes	NPWS (2024) Conservation Objectives: Ireland's Eye SPA 004117. Version 1. National Parks and Wildlife Service, Department of Housing, Local Government and Heritage
Baldoyle Bay SPA (Site Code IE004016)	<10km	Light-bellied Brent Goose (<i>Branta bernicla hrota</i>) [A046] Shelduck (<i>Tadorna tadorna</i>) [A048] Ringed Plover (<i>Charadrius hiaticula</i>) [A137] Golden Plover (<i>Pluvialis apricaria</i>) [A140] Grey Plover (<i>Pluvialis squatarola</i>) [A141] Bar-tailed Godwit (<i>Limosa lapponica</i>) [A157] Wetland and Waterbirds [A999]	Yes	Yes – possible from visual and above water noise	Yes	NPWS (2013) Conservation Objectives: Baldoyle Bay SPA 004016. Version 1. National Parks and Wildlife Service, Department of Arts, Heritage and the Gaeltacht.
Dalkey Islands SPA (Site Code IE004172)	<10km	Roseate Tern (<i>Sterna dougallii</i>) [A192] Common Tern (<i>Sterna hirundo</i>) [A193] Arctic Tern (<i>Sterna paradisaea</i>) [A194]	Yes	Yes – possible disturbance from above and under water noise, visual disturbance	Yes	NPWS (2024) Conservation Objectives: Dalkey Islands SPA 004172. Version 1. National Parks and Wildlife Service, Department of Housing, Local Government and Heritage.

European Site Code ¹²	Distance from the Proposed MUL Area (km)	List of Qualifying Interests	Connections (Source - Pathway - Receptors)	Qualifying Interests considered further in Screening Y/N	European Site Screened in for Stage 2 Appropriate Assessment	Site Conservation Objectives
Lambay Island SPA (Site Code IE004069)	10 – 25km	Greylag Goose (<i>Anser anser</i>) [A043] Lesser Black-backed Gull (<i>Larus fuscus</i>) [A183] Cormorant (<i>Phalacrocorax carbo</i>) [A017] Shag (<i>Phalacrocorax aristotelis</i>) [A018]	No	No	Yes	NPWS (2024) Conservation Objectives: Lambay Island SPA 004069. Version 1. National Parks and Wildlife Service, Department of Housing, Local Government and Heritage.
		Fulmar (<i>Fulmarus glacialis</i>) [A009] Herring Gull (<i>Larus argentatus</i>) [A184] Kittiwake (<i>Rissa tridactyla</i>) [A188] Guillemot (<i>Uria aalge</i>) [A199] Razorbill (<i>Alca torda</i>) [A200] Puffin (<i>Fratercula arctica</i>) [A204]	Yes	Yes – possible disturbance from above and under water noise, visual disturbance		
Malahide Estuary SPA (Site Code IE004025)	10 – 25km	Great Crested Grebe (<i>Podiceps cristatus</i>) [A005] Light-bellied Brent Goose (<i>Branta bernicla hrota</i>) [A046] Shelduck (<i>Tadorna tadorna</i>) [A048] Pintail (<i>Anas acuta</i>) [A054] Goldeneye (<i>Bucephala clangula</i>) [A067] Red-breasted Merganser (<i>Mergus serrator</i>) [A069] Oystercatcher (<i>Haematopus ostralegus</i>) [A130] Golden Plover (<i>Pluvialis apricaria</i>) [A140] Grey Plover (<i>Pluvialis squatarola</i>) [A141] Knot (<i>Calidris canutus</i>) [A143] Dunlin (<i>Calidris alpina</i>) [A149] Black-tailed Godwit (<i>Limosa limosa</i>) [A156] Bar-tailed Godwit (<i>Limosa lapponica</i>) [A157] Redshank (<i>Tringa totanus</i>) [A162] Wetland and Waterbirds [A999]	No	No	No	NPWS (2013) Conservation Objectives: Malahide Estuary SPA 004025. Version 1. National Parks and Wildlife Service, Department of Arts, Heritage and the Gaeltacht.
Rogerstown Estuary SPA (Site Code IE004015)	10 – 25km	Greylag Goose (<i>Anser anser</i>) [A043] Light-bellied Brent Goose (<i>Branta bernicla hrota</i>) [A046] Shelduck (<i>Tadorna tadorna</i>) [A048] Shoveler (<i>Anas clypeata</i>) [A056] Oystercatcher (<i>Haematopus ostralegus</i>) [A130]	No	No	No	NPWS (2013) Conservation Objectives: Rogerstown Estuary SPA 004015. Version 1. National Parks and Wildlife

European Site Code ¹²	Distance from the Proposed MUL Area (km)	List of Qualifying Interests	Connections (Source - Pathway - Receptors)	Qualifying Interests considered further in Screening Y/N	European Site Screened in for Stage 2 Appropriate Assessment	Site Conservation Objectives
		Ringed Plover (<i>Charadrius hiaticula</i>) [A137] Grey Plover (<i>Pluvialis squatarola</i>) [A141] Knot (<i>Calidris canutus</i>) [A143] Dunlin (<i>Calidris alpina</i>) [A149] Black-tailed Godwit (<i>Limosa limosa</i>) [A156] Redshank (<i>Tringa totanus</i>) [A162] Wetland and Waterbirds [A999]				Service, Department of Arts, Heritage and the Gaeltacht.
Rockabill SPA (Site code:004014)	25 – 50km	Purple Sandpiper (<i>Calidris maritima</i>) [A148]	No	No	Yes	NPWS (2013) Conservation Objectives: Rockabill SPA 004014. Version 1. National Parks and Wildlife Service, Department of Arts, Heritage and the Gaeltacht.
		Roseate Tern (<i>Sterna dougallii</i>) [A192] Common Tern (<i>Sterna hirundo</i>) [A193] Arctic Tern (<i>Sterna paradisaea</i>) [A194]	Yes	Yes – possible visual and above water noise disturbance		
Skerries Islands SPA (Site code: 004122)	25 – 50km	Cormorant (<i>Phalacrocorax carbo</i>) [A017] Shag (<i>Phalacrocorax aristotelis</i>) [A018] Light-bellied Brent Goose (<i>Branta bernicla hrota</i>) [A046] Purple Sandpiper (<i>Calidris maritima</i>) [A148] Turnstone (<i>Arenaria interpres</i>) [A169]	No	No	No	NPWS (2024) Conservation Objectives: Skerries Islands SPA 004122. Version 1. National Parks and Wildlife Service, Department of Housing, Local Government and Heritage.
		Herring Gull (<i>Larus argentatus</i>) [A184]	Yes	Yes – possible visual and above water noise disturbance		
River Nanny Estuary and Shore SPA (Site code: 004158)	25 – 50km	Oystercatcher (<i>Haematopus ostralegus</i>) [A130] Ringed Plover (<i>Charadrius hiaticula</i>) [A137] Golden Plover (<i>Pluvialis apricaria</i>) [A140] Knot (<i>Calidris canutus</i>) [A143] Sanderling (<i>Calidris alba</i>) [A144] Wetland and Waterbirds [A999]	No	No	Yes	NPWS (2012) Conservation Objectives: River Nanny Estuary and Shore SPA 004158. Version 1.0.

European Site Code ¹²	Distance from the Proposed MUL Area (km)	List of Qualifying Interests	Connections (Source - Pathway - Receptors)	Qualifying Interests considered further in Screening Y/N	European Site Screened in for Stage 2 Appropriate Assessment	Site Conservation Objectives
		Herring Gull (<i>Larus argentatus</i>) [A184]	Yes	Yes – possible visual and above water noise disturbance		National Parks and Wildlife Service, Department of Arts, Heritage and the Gaeltacht.
Wickow Head SPA (Site code: 004127)	<10km	Kittiwake (<i>Rissa tridactyla</i>) [A188]	Yes	Yes – possible visual and above water noise disturbance	Yes	NPWS (2024) Conservation Objectives: Wicklow Head SPA 004127. Version 1. National Parks and Wildlife Service, Department of Housing, Local Government and Heritage.
Boyne Estuary SPA (Site code: 004080)	25 – 50km	Shelduck (<i>Tadorna tadorna</i>) [A048] Oystercatcher (<i>Haematopus ostralegus</i>) [A130] Golden Plover (<i>Pluvialis apricaria</i>) [A140] Grey Plover (<i>Pluvialis squatarola</i>) [A141] Lapwing (<i>Vanellus vanellus</i>) [A142] Knot (<i>Calidris canutus</i>) [A143] Sanderling (<i>Calidris alba</i>) [A144] Black-tailed Godwit (<i>Limosa limosa</i>) [A156] Redshank (<i>Tringa totanus</i>) [A162] Turnstone (<i>Arenaria interpres</i>) [A169] Little Tern (<i>Sterna albifrons</i>) [A195] Wetland and Waterbirds [A999]	No	No	No	NPWS (2013) Conservation Objectives: Boyne Estuary SPA 004080. Version 1. National Parks and Wildlife Service, Department of Arts, Heritage and the Gaeltacht.
The Raven SPA (Site code IE 0004019)	50 – 75km	Red-throated Diver (<i>Gavia stellata</i>) [A001] Cormorant (<i>Phalacrocorax carbo</i>) [A017] Common Scoter (<i>Melanitta nigra</i>) [A065] Grey Plover (<i>Pluvialis squatarola</i>) [A141] Sanderling (<i>Calidris alba</i>) [A144]	No	No	No	NPWS (2012) Conservation Objectives: The Raven SPA 0004019. Version 1.0. National Parks and Wildlife Service,

European Site Code ¹²	Distance from the Proposed MUL Area (km)	List of Qualifying Interests	Connections (Source - Pathway - Receptors)	Qualifying Interests considered further in Screening Y/N	European Site Screened in for Stage 2 Appropriate Assessment	Site Conservation Objectives
		Greenland White-fronted Goose (<i>Anser albifrons flavirostris</i>) [A395] Wetland and Waterbirds [A999]				Department of Arts, Heritage and the Gaeltacht
Wexford Harbour and Slobbs SPA (Site code: IE0004076)	50 - 75km	Little Grebe (<i>Tachybaptus ruficollis</i>) [A004] Great Crested Grebe (<i>Podiceps cristatus</i>) [A005] Cormorant (<i>Phalacrocorax carbo</i>) [A017] Grey Heron (<i>Ardea cinerea</i>) [A028] Bewick's Swan (<i>Cygnus columbianus bewickii</i>) [A037] Whooper Swan (<i>Cygnus cygnus</i>) [A038] Light-bellied Brent Goose (<i>Branta bernicla hrota</i>) [A046] Shelduck (<i>Tadorna tadorna</i>) [A048] Wigeon (<i>Anas penelope</i>) [A050] Teal (<i>Anas crecca</i>) [A052] Mallard (<i>Anas platyrhynchos</i>) [A053] Pintail (<i>Anas acuta</i>) [A054] Scaup (<i>Aythya marila</i>) [A062] Goldeneye (<i>Bucephala clangula</i>) [A067] Red-breasted Merganser (<i>Mergus serrator</i>) [A069] Hen Harrier (<i>Circus cyaneus</i>) [A082] Coot (<i>Fulica atra</i>) [A125] Oystercatcher (<i>Haematopus ostralegus</i>) [A130] Golden Plover (<i>Pluvialis apricaria</i>) [A140] Grey Plover (<i>Pluvialis squatarola</i>) [A141] Lapwing (<i>Vanellus vanellus</i>) [A142] Knot (<i>Calidris canutus</i>) [A143] Sanderling (<i>Calidris alba</i>) [A144] Dunlin (<i>Calidris alpina</i>) [A149] Black-tailed Godwit (<i>Limosa limosa</i>) [A156] Bar-tailed Godwit (<i>Limosa lapponica</i>) [A157] Curlew (<i>Numenius arquata</i>) [A160] Redshank (<i>Tringa totanus</i>) [A162]	No	No	Yes	NPWS (2012) Conservation Objectives: Wexford Harbour and Slobbs SPA 004076. Version 1.0. National Parks and Wildlife Service, Department of Arts, Heritage and the Gaeltacht

European Site Code ¹²	Distance from the Proposed MUL Area (km)	List of Qualifying Interests	Connections (Source - Pathway - Receptors)	Qualifying Interests considered further in Screening Y/N	European Site Screened in for Stage 2 Appropriate Assessment	Site Conservation Objectives
		Black-headed Gull (<i>Chroicocephalus ridibundus</i>) [A179] Little Tern (<i>Sterna albifrons</i>) [A195] Greenland White-fronted Goose (<i>Anser albifrons flavirostris</i>) [A395] Wetland and Waterbirds [A999]				
		Lesser Black-backed Gull (<i>Larus fuscus</i>) [A183]	Yes – within foraging range	Yes – possible underwater noise disturbance, visual disturbance		
Seas off Wexford SPA (site code IE0004237)	25-50km	Red-throated Diver (<i>Gavia stellata</i>) [A001] Manx Shearwater (<i>Puffinus puffinus</i>) [A013] Cormorant (<i>Phalacrocorax carbo</i>) [A017] Shag (<i>Phalacrocorax aristotelis</i>) [A018] Common Scoter (<i>Melanitta nigra</i>) [A065] Mediterranean Gull (<i>Larus melanocephalus</i>) [A176] Black-headed Gull (<i>Chroicocephalus ridibundus</i>) [A179] Kittiwake (<i>Rissa tridactyla</i>) [A188] Sandwich Tern (<i>Sterna sandvicensis</i>) [A191] Roseate Tern (<i>Sterna dougallii</i>) [A192] Common Tern (<i>Sterna hirundo</i>) [A193] Arctic Tern (<i>Sterna paradisaea</i>) [A194] Little Tern (<i>Sterna albifrons</i>) [A195] Guillemot (<i>Uria aalge</i>) [A199] Razorbill (<i>Alca torda</i>) [A200]	No	No	Yes	NPWS (2024) Conservation Objectives: Seas off Wexford SPA 004237. Version 1. National Parks and Wildlife Service, Department of Housing, Local Government and Heritage.
		Puffin (<i>Fratercula arctica</i>) [A204] Lesser Black-backed Gull (<i>Larus fuscus</i>) [A183] Herring Gull (<i>Larus argentatus</i>) [A184] Lesser Black-backed Gull (<i>Larus fuscus</i>) [A183] Herring Gull (<i>Larus argentatus</i>) [A184] Gannet (<i>Morus bassanus</i>) [A016] Fulmar (<i>Fulmarus glacialis</i>) [A009]	Yes – within foraging range	Yes – possible above and under water noise disturbance, visual disturbance		

European Site Code ¹²	Distance from the Proposed MUL Area (km)	List of Qualifying Interests	Connections (Source - Pathway - Receptors)	Qualifying Interests considered further in Screening Y/N	European Site Screened in for Stage 2 Appropriate Assessment	Site Conservation Objectives
Dundalk Bay SPA (Site code: 004026)	50 - 75km	Great Crested Grebe (<i>Podiceps cristatus</i>) [A005] Greylag Goose (<i>Anser anser</i>) [A043] Light-bellied Brent Goose (<i>Branta bernicla hrota</i>) [A046] Shelduck (<i>Tadorna tadorna</i>) [A048] Teal (<i>Anas crecca</i>) [A052] Mallard (<i>Anas platyrhynchos</i>) [A053] Pintail (<i>Anas acuta</i>) [A054] Common Scoter (<i>Melanitta nigra</i>) [A065] Red-breasted Merganser (<i>Mergus serrator</i>) [A069] Oystercatcher (<i>Haematopus ostralegus</i>) [A130] Ringed Plover (<i>Charadrius hiaticula</i>) [A137] Golden Plover (<i>Pluvialis apricaria</i>) [A140] Grey Plover (<i>Pluvialis squatarola</i>) [A141] Lapwing (<i>Vanellus vanellus</i>) [A142] Knot (<i>Calidris canutus</i>) [A143] Dunlin (<i>Calidris alpina</i>) [A149] Black-tailed Godwit (<i>Limosa limosa</i>) [A156] Bar-tailed Godwit (<i>Limosa lapponica</i>) [A157] Curlew (<i>Numenius arquata</i>) [A160] Redshank (<i>Tringa totanus</i>) [A162] Wetland and Waterbirds [A999]	No	No	Yes	NPWS (2011) Conservation Objectives: Dundalk Bay SPA 004026. Version 1.0. National Parks and Wildlife Service, Department of Arts, Heritage and the Gaeltacht
		Black-headed Gull (<i>Chroicocephalus ridibundus</i>) [A179] Common Gull (<i>Larus canus</i>) [A182] Herring Gull (<i>Larus argentatus</i>) [A184]	Yes	Yes – possible visual and above water noise disturbance		

Assessment of likely significant effects

Identify all potential direct and indirect impacts that may have an effect on the conservation objectives of a European site, taking into account the size and scale of the project

Impacts	Possible significance of impacts
Disturbance from underwater noise	Possible temporal impacts on marine mammals and birds.
Visual and above water noise disturbance.	Possible temporal impacts on qualifying interests of SPAs.
Physical disturbance and habitat loss	The works will be temporary in nature and will not result in permanent habitat loss.
Accidental incidents	Possible water quality deterioration from accidental incidents with survey vessels.

In-combination effects

MARA has developed a stepwise approach for identifying other In-Combination plans and projects. Using professional and scientific judgement, the key steps for assessing cumulative effects are as follows:

1. Defining the Cumulative Effects Spatial Scope (CESS)
2. Defining the Cumulative Effects Temporal Scope (CETS)
3. Impact identification
4. Pathway identification
5. Prediction
6. Identification of Plans or Projects that could act in combination
7. Screening Stage Cumulative Effects Assessment conclusion
8. Managing cumulative impacts - to be carried out as part of Stage 2 AA process

The CESS has been defined as 5 km and the CETS as 5 years. The definition of the CESS is based on acoustic survey equipment effective deterrence ranges as per [JNCC Guidance on Assessing the Significance of Noise Disturbance against Harbour Porpoise SACs Conservation Objectives](#). The CETS is the Maritime Usage Licence period for which the applicant has applied.

Using the above 8 step approach, and following a search of relevant databases (including but not limited to MARA, Foreshore, planning, EPA authorisation databases) undertaken on the 25th April 2025, the projects listed in Table 3 and plans listed below have been identified, in particular, as having the potential to act in-combination with the proposed site investigation activities.

Table 3: List of projects which, in particular, were considered to have potential in-combination impacts (due to their nature, spatial and temporal overlap with the proposed maritime usage) on European sites.

Application Ref.	Project description	Distance from Proposed Maritime Usage	Project Status
FS007546	Marine environmental surveys for the purposes of site investigation	Overlap	Licensed
LIC230007	Marine environmental surveys for the purposes of site investigation	<5km	Applied
MUL230026	Dredging and deposit of dredged material	Overlap	Applied
MUL240010	Marine environmental surveys for the purposes of site investigation	Overlap	Applied
S0004-03	EPA Dumping at Sea permit (Dublin Port Company)	<10km	Permitted
S0024-02	EPA Dumping at Sea permit (Dublin Port Company)	<10km	Permitted

The following plans, related to the development of the maritime environment were also identified:

- The Climate Action Plan 2025;
- Water Action Plan 2024: Ireland's third River Basin Management Plan.

Likely significant in-combination effects between this project, and the plans and projects above on the conservation objectives of Natura 2000 sites considered in this report cannot be excluded at this stage.

Were mitigation measures considered during the screening process?

No

Screening Determination Statement


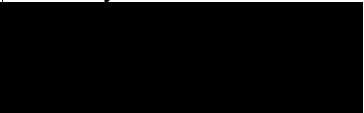
The assessment of significant effects:

On the basis of the information on file, and having regard to:

- The nature and scale of the proposed development;
- The distance to the nearest European sites;
- The potential for in-combination effects with other plans and projects;
- Possible disturbance from underwater noise;
- Possible visual and above water noise disturbance;
- Possible physical disturbance and habitat loss;
- Possible pollution due to accidental events from survey vessels.

Having considered the legal framework applicable to Appropriate Assessment, it was concluded that the proposed maritime usage by **Codling Wind Park Limited**. to undertake **Marine environmental surveys for the purposes of site investigation or in support of an application under Part XXI of the Act of 2000 in the Irish Sea off the coasts of Dublin and Wicklow (MUL230034)** will require Stage 2 Appropriate Assessment. It cannot be excluded, on the basis of objective scientific information, following screening, that the proposed project, individually or in combination with other plans or projects, will have a significant effect on a European Site.

Conclusion

	Tick as appropriate	Recommendation
(i) It is clear that there is no likelihood of significant/ possible effects on a European site		
(ii) It is uncertain whether the proposal will have a significant/possible effect on a European site	X	Proceed to Stage 2 Appropriate Assessment
(iii) Significant effects are likely		
Signature and Date of Recommending Officer	 Suzanne Wylde Senior Marine Advisor Assessment, Research and Data Unit 2 nd May 2025	
Signature and Date of Decision Maker	 John Evans Director, Assessment, Research and Data Unit 06/05/2025	

