

Screening for Appropriate Assessment

Maritime Usage Licence Application Geophysical Site Investigation Surveys - Department of the Environment, Climate and Communications (DECC)

Step 1 - Description of Project/Proposal and local site characteristics

| | |
|---|--|
| | |
| File Reference No | LIC240006 |
| Brief Description of the Project | <p>The Department of Environment, Climate and Communications are applying for a Maritime Usage Licence to undertake geophysical surveys off the coast of Counties Cork and Waterford. The proposed geophysical surveys include multibeam echosounder, sub bottom profiler, sparkers, mini-air-gun and hydrophones. The surface towed sparker system will be the primary sound source used, with the mini-airgun utilised when inadequate sub-surface penetration is achieved due to local geological conditions.</p> <p>Ancillary instrumentation may be deployed during weather downtime periods where geophysical operations cannot proceed including a Day Grab or Hammon grab, drop camera, and side scan sonar.</p> <p>The Maritime Usage Licence Area is approximately 4,754 km² in area and is 60 m from the HWM at its closest point.</p> <p>It is anticipated that the works will take place from May to September 2024 and will take approximately 52 days.</p> |
| Brief Description of the Site Characteristics | <p>The sediment types in the area rang from muddy sand, through sand, gravelly muddy sand, sandy gravel and gravely mud. Shallow sublittoral sand and shallow sublittoral coarse sediment dominate the area is the deeper (>40m) sections of the proposed survey area. Closer inshore, a greater range of habitats are present including shallow sublittoral mixed sediment and shallow sublittoral rock and biogenic reef.</p> <p>The area provides foraging habitat for seabirds and is a diverse range of marine mammals utilise this area also.</p> |

Step 2 - Identification of relevant Natura 2000 sites using Source-Pathway Receptor Model and compilation of information on Qualifying Interests and Conservation Objectives. The QIs in bold text are screened in for Stage 2 Appropriate Assessment.

As these works are being undertaken in the marine environment, using the Source-Pathway-Receptor model (OPR 2021), only marine and coastal Natura 2000 sites were considered in this screening process.

| European Site Code | Distance from the Proposed Development (km) | List of Qualifying Interests | Connections (Source-Pathway Receptors) | Qualifying Interests considered further in Screening Y/N | European Site Screened In for stage 2 Appropriate Assessment |
|--|---|--|--|--|--|
| Hook Head SAC [Site code IE00] | 0/abuts SAC boundary | Large shallow inlets and bays [1160] Reefs [1170] Vegetated sea cliffs of the Atlantic and Baltic coasts [1230] | No | No | No |
| Ballymacoda (Clonpriest and Pillmore) SAC [Site code IE000077] | 3 | Estuaries [1130] Mudflats and sandflats not covered by seawater at low tide [1140] Salicornia and other annuals colonising mud and sand [1310] Atlantic salt meadows (<i>Glauco-Puccinellietalia maritima</i>) [1330] Mediterranean salt meadows (<i>Juncetalia maritimi</i>) [1410] | No | No | No |
| Helvick Head SAC [Site code IE000665] | 5 | Vegetated sea cliffs of the Atlantic and Baltic coasts [1230] European dry heaths [4030] | No | No | No |
| Ardmore Head SAC [Site code IE002123] | 6.5 | Vegetated sea cliffs of the Atlantic and Baltic coasts [1230] European dry heaths [4030] | No | No | No |
| Blackwater River (Cork/Waterford) SAC [Site code IE002170] | 7.2 | Estuaries [1130] Mudflats and sandflats not covered by seawater at low tide [1140] Perennial vegetation of stony banks [1220] Salicornia and other annuals colonising mud and sand [1310] Atlantic salt meadows (<i>Glauco-Puccinellietalia maritima</i>) [1330] Mediterranean salt meadows (<i>Juncetalia maritimi</i>) [1410] | No | No | No |

| European Site Code | Distance from the Proposed Development (km) | List of Qualifying Interests | Connections (Source-Pathway Receptors) | Qualifying Interests considered further in Screening Y/N | European Site Screened In for stage 2 Appropriate Assessment |
|---|---|--|--|--|--|
| | | <p>Water courses of plain to montane levels with the Ranunculion fluitantis and Callitriche-Batrachion vegetation [3260]</p> <p>Old sessile oak woods with Ilex and Blechnum in the British Isles [91A0]</p> <p>Alluvial forests with Alnus glutinosa and Fraxinus excelsior (Alno-Padion, Alnion incanae, Salicion albae) [91E0]</p> <p>Austropotamobius pallipes (White-clawed Crayfish) [1092]</p> <p>Trichomanes speciosum (Killarney Fern) [1421]</p> <p>Margaritifera margaritifera (Freshwater Pearl Mussel) [1029]</p> <p>Petromyzon marinus (Sea Lamprey) [1095]</p> <p>Lampetra planeri (Brook Lamprey) [1096]</p> <p>Lampetra fluviatilis (River Lamprey) [1099]</p> <p>Alosa fallax fallax (Twaite Shad) [1103]</p> <p>Lutra lutra (Otter) [1355]</p> <p>Salmo salar (Salmon) [1106]</p> | | | |
| Great Island SAC [Site code IE001058] | 11.6 | <p>Mudflats and sandflats not covered by seawater at low tide Atlantic [1140]</p> <p>Atlantic salt meadows (Glauco-Puccinellietalia maritima) [1330]</p> | No | No | No |
| Saltee Islands SAC [Site code IE000707] | 15.4 | <p>Mudflats and sandflats not covered by seawater at low tide [1140]</p> <p>Large shallow inlets and bays [1160]</p> <p>Reefs [1170]</p> <p>Vegetated sea cliffs of the Atlantic and Baltic coasts [1230]</p> <p>Submerged or partially submerged sea caves [8330]</p> | No | No | Yes |
| | | <p>Halichoerus grypus (Grey Seal) [1364]</p> | Yes - foraging ranges of up to 448km for Grey Seal (Carter et al, 2022) ¹ | Yes – possible disturbance from underwater noise | |

| European Site Code | Distance from the Proposed Development (km) | List of Qualifying Interests | Connections (Source-Pathway Receptors) | Qualifying Interests considered further in Screening Y/N | European Site Screened In for stage 2 Appropriate Assessment |
|---|---|--|--|--|--|
| Carnsore Point SAC [Site code IE002269] | 19.5 | Mudflats and sandflats not covered by seawater at low tide [1140] Reefs [1170] | No | No | No |
| Courtmacsherry Estuary SAC [Site code IE001230] | 22.5 | Estuaries [1130] Mudflats and sandflats not covered by seawater at low tide [1140] Annual vegetation of drift lines [1210] Perennial vegetation of stony banks [1220] Salicornia and other annuals colonising mud and sand [1310] Atlantic salt meadows (<i>Glauco-Puccinellietalia maritima</i>) [1330] Mediterranean salt meadows (<i>Juncetalia maritimi</i>) [1410] Embryonic shifting dunes [2110] Shifting dunes along the shoreline with <i>Ammophila arenaria</i> (white dunes) [2120] Fixed coastal dunes with herbaceous vegetation (grey dunes) [2130] | No | No | No |
| Slaney River Valley SAC [Site code IE 000781] | 42 | Estuaries [1130] Mudflats and sandflats not covered by seawater at low tide [1140] Atlantic salt meadows (<i>Glauco-Puccinellietalia maritima</i>) [1330] Mediterranean salt meadows (<i>Juncetalia maritimi</i>) [1410] Water courses of plain to montane levels with the <i>Ranunculus fluitantis</i> and <i>Callitriche-Batrachion</i> vegetation [3260] Old sessile oak woods with <i>Ilex</i> and <i>Blechnum</i> in the British Isles [91A0] Alluvial forests with <i>Alnus glutinosa</i> and <i>Fraxinus excelsior</i> (<i>Alno-Padion</i> , <i>Alnion incanae</i> , <i>Salicion albae</i>) [91E0] <i>Margaritifera margaritifera</i> (Freshwater Pearl Mussel) [1029] <i>Lampetra planeri</i> (Brook Lamprey) [1096] <i>Lutra lutra</i> (Otter) [1355] <i>Petromyzon marinus</i> (Sea Lamprey) [1095] <i>Lampetra fluviatilis</i> (River Lamprey) [1099] <i>Alosa fallax fallax</i> (Twaite Shad) [1103] <i>Salmo salar</i> (Salmon) [1106] | No | No | Yes |

| European Site Code | Distance from the Proposed Development (km) | List of Qualifying Interests | Connections (Source-Pathway Receptors) | Qualifying Interests considered further in Screening Y/N | European Site Screened In for stage 2 Appropriate Assessment |
|--|---|---|--|--|--|
| | | Phoca vitulina (Harbour Seal) [1365] | Yes - foraging ranges of up to 273km for Harbour Seal (Carter et al, 2022) ¹ | Yes – possible disturbance from underwater noise | |
| Roaringwater Bay and Islands SAC [Site code IE000101] | 75 | Large shallow inlets and bays [1160] Reefs [1170] Vegetated sea cliffs of the Atlantic and Baltic coasts [1230] European dry heaths [4030] Submerged or partially submerged sea caves [8330] Lutra lutra (Otter) [1355] | No | No | Yes |
| | | Halichoerus grypus (Grey Seal) [1364] Phocoena phocoena (Harbour Porpoise) [1351] | Yes - foraging ranges of up to 448km for Grey Seal (Carter et al, 2022) ¹ and within Harbour Porpoise Management Unit (JNCC, 2023) ² | Yes – possible disturbance from underwater noise | |
| Kenmare River SAC [Site code IE002158] | 132 | Large shallow inlets and bays [1160] Reefs [1170] Perennial vegetation of stony banks [1220] Vegetated sea cliffs of the Atlantic and Baltic coasts [1230] Atlantic salt meadows (<i>Glauco-Puccinellietalia maritima</i>) [1330] Mediterranean salt meadows (<i>Juncetalia maritimi</i>) [1410] Shifting dunes along the shoreline with <i>Ammophila arenaria</i> (white dunes) [2120] Fixed coastal dunes with herbaceous vegetation (grey dunes) [2130] European dry heaths [4030] <i>Juniperus communis</i> formations on heaths or calcareous grasslands [5130] | No | No | |

| European Site Code | Distance from the Proposed Development (km) | List of Qualifying Interests | Connections (Source-Pathway Receptors) | Qualifying Interests considered further in Screening Y/N | European Site Screened In for stage 2 Appropriate Assessment |
|---|---|---|---|--|--|
| | | Calaminarian grasslands of the <i>Violetalia calaminariae</i> [6130] Submerged or partially submerged sea caves [8330] Vertigo angustior (Narrow-mouthed Whorl Snail) [1014] Rhinolophus hipposideros (Lesser Horseshoe Bat) [1303] Lutra lutra (Otter) [1355] | | | Yes |
| | | Phoca vitulina (Harbour Seal) [1365] | Yes - foraging ranges of up to 273km for Harbour Seal (Carter et al, 2022) ¹ | Yes | |
| Glengarriff Harbour and Woodland SAC [Site code IE000090] | 150 | Old sessile oak woods with Ilex and Blechnum in the British Isles [91A0] Alluvial forests with Alnus glutinosa and Fraxinus excelsior (Alno-Padion, Alnion incanae, Salicion albae) [91E0] Geomalacus maculosus (Kerry Slug) [1024] Rhinolophus hipposideros (Lesser Horseshoe Bat) [1303] Lutra lutra (Otter) [1355] | No | No | Yes |
| | | Phoca vitulina (Harbour Seal) [1365] | Yes - foraging ranges of up to 273km for Harbour Seal (Carter et al, 2022) ¹ | Yes – possible disturbance from underwater noise | |
| Blasket Islands SAC [Site code IE002172] | 188 | Reefs [1170] Vegetated sea cliffs of the Atlantic and Baltic coasts [1230] European dry heaths [4030] Submerged or partially submerged sea caves [8330] Halichoerus grypus (Grey Seal) [1364] | No | No | Yes |

| European Site Code | Distance from the Proposed Development (km) | List of Qualifying Interests | Connections (Source-Pathway Receptors) | Qualifying Interests considered further in Screening Y/N | European Site Screened In for stage 2 Appropriate Assessment |
|---|---|--|--|--|--|
| | | Phocoena phocoena (Harbour Porpoise) [1351] | Yes - within Harbour Porpoise Management Unit (JNCC, 2023) ² | Yes – possible disturbance from underwater noise | |
| Lambay Island SAC [Site code IE000204] | 175 | Reefs [1170] Vegetated sea cliffs of the Atlantic and Baltic coasts [1230] Phoca vitulina (Harbour Seal) [1365] | No | No | Yes |
| | | Halichoerus grypus (Grey Seal) [1364] | Yes - foraging ranges of up to 448km for Grey Seal (Carter et al, 2022) ¹ | Yes – possible disturbance from underwater noise | |
| Lower River Shannon SAC [Site code IE002165] | Within Management Unit for Bottlenose Dolphin | Sandbanks which are slightly covered by sea water all the time [1110] Estuaries [1130] Mudflats and sandflats not covered by seawater at low tide [1140] Coastal lagoons [1150] Large shallow inlets and bays [1160] Reefs [1170] Perennial vegetation of stony banks [1220] Vegetated sea cliffs of the Atlantic and Baltic coasts [1230] Salicornia and other annuals colonising mud and sand [1310] Atlantic salt meadows (<i>Glauco-Puccinellietalia maritimae</i>) [1330] Mediterranean salt meadows (<i>Juncetalia maritimi</i>) [1410] Water courses of plain to montane levels with the <i>Ranunculion fluitantis</i> and <i>Callitriche-Batrachion</i> vegetation [3260] Molinia meadows on calcareous, peaty or clayey-silt-laden soils (<i>Molinion caeruleae</i>) [6410] | No | No | |

| European Site Code | Distance from the Proposed Development (km) | List of Qualifying Interests | Connections (Source-Pathway Receptors) | Qualifying Interests considered further in Screening Y/N | European Site Screened In for stage 2 Appropriate Assessment |
|--|---|--|---|--|--|
| | | <p>Alluvial forests with <i>Alnus glutinosa</i> and <i>Fraxinus excelsior</i> (Alno-Padion, Alnion incanae, Salicion albae) [91E0] Margaritifera margaritifera (Freshwater Pearl Mussel) [1029] Petromyzon marinus (Sea Lamprey) [1095] Lampetra planeri (Brook Lamprey) [1096] Lampetra fluviatilis (River Lamprey) [1099] Salmo salar (Salmon) [1106] Lutra lutra (Otter) [1355]</p> | | | Yes |
| | | <p>Tursiops truncatus (Common Bottlenose Dolphin) [1349]</p> | Yes - within Bottlenose Dolphin Management Unit (JNCC, 2023) ² | Yes – possible disturbance from underwater noise | |
| West Connacht Coast SAC [Site code IE002998] | Within Management Unit for Bottlenose Dolphin | <p>Tursiops truncatus (Common Bottlenose Dolphin) [1349]</p> | Yes - within Bottlenose Dolphin Management Unit (JNCC, 2023) ² | Yes – possible disturbance from underwater noise | Yes |
| Duvillaun Islands SAC [Site code IE000495] | Within Management Unit for Bottlenose Dolphin | <p>Halichoerus grypus (Grey Seal) [1364]</p> | No | No | Yes |
| | | <p>Tursiops truncatus (Common Bottlenose Dolphin) [1349]</p> | Yes - within Bottlenose Dolphin Management Unit (JNCC, 2023) ² | Yes – possible disturbance from underwater noise | |

| European Site Code | Distance from the Proposed Development (km) | List of Qualifying Interests | Connections (Source-Pathway Receptors) | Qualifying Interests considered further in Screening Y/N | European Site Screened In for stage 2 Appropriate Assessment |
|---|---|--|--|--|--|
| Rockabill to Dalkey Island SAC [Site code IE003000] | Within MU for Harbour porpoise | Reefs [1170] | No | No | Yes |
| | | Phocoena phocoena (Harbour Porpoise) [1351] | Yes -within Harbour Porpoise Management Unit (JNCC, 2023) ² | Yes – possible disturbance from underwater noise | |
| Slyne Head Islands SAC [Site code IE000328] | 348/Within Management Unit for Bottlenose Dolphin | Reefs [1170] | No | No | Yes |
| | | Halichoerus grypus (Grey Seal) [1364] Tursiops truncatus (Common Bottlenose Dolphin) [1349] | Yes - foraging ranges of up to 448km for Grey Seal (Carter et al, 2022) ¹ and within Bottlenose Dolphin Management Unit (JNCC, 2023) ² | Yes | |
| Inishbofin and Inishshark SAC [Site code IE000278] | 373 | Coastal lagoons [1150] Oligotrophic waters containing very few minerals of sandy plains (<i>Littorelletalia uniflorae</i>) [3110] Northern Atlantic wet heaths with <i>Erica tetralix</i> [4010] European dry heaths [4030] | No | No | Yes |
| | | Halichoerus grypus (Grey Seal) [1364] | Yes - foraging ranges of up to 448km for Grey Seal (Carter et al, 2022) | Yes | |

| European Site Code | Distance from the Proposed Development (km) | List of Qualifying Interests | Connections (Source-Pathway Receptors) | Qualifying Interests considered further in Screening Y/N | European Site Screened In for stage 2 Appropriate Assessment |
|---|---|--|--|--|--|
| Slyne Head Peninsula SAC [Site code IE002074] | Within Management Unit for Bottlenose Dolphin | Coastal lagoons [1150] Large shallow inlets and bays [1160] Reefs [1170] Annual vegetation of drift lines [1210] Perennial vegetation of stony banks [1220] Atlantic salt meadows (<i>Glauco-Puccinellietalia maritimae</i>) [1330] Mediterranean salt meadows (<i>Juncetalia maritimi</i>) [1410] Embryonic shifting dunes [2110] Shifting dunes along the shoreline with <i>Ammophila arenaria</i> (white dunes) [2120] Machairs (* in Ireland) [21A0] Oligotrophic waters containing very few minerals of sandy plains (<i>Littorelletalia uniflorae</i>) [3110] Oligotrophic to mesotrophic standing waters with vegetation of the <i>Littorelletea uniflorae</i> and/or <i>Isoeto-Nanojuncetea</i> [3130] Hard oligo-mesotrophic waters with benthic vegetation of <i>Chara</i> spp. [3140] European dry heaths [4030] <i>Juniperus communis</i> formations on heaths or calcareous grasslands [5130] Semi-natural dry grasslands and scrubland facies on calcareous substrates (<i>Festuco-Brometalia</i>) (* important orchid sites) [6210] <i>Molinia</i> meadows on calcareous, peaty or clayey-silt-laden soils (<i>Molinion caeruleae</i>) [6410] Lowland hay meadows (<i>Alopecurus pratensis</i> , <i>Sanguisorba officinalis</i>) [6510] Alkaline fens [7230] <i>Petalophyllum ralfsii</i> (Petalwort) [1395] | No | No | Yes |

| European Site Code | Distance from the Proposed Development (km) | List of Qualifying Interests | Connections (Source-Pathway Receptors) | Qualifying Interests considered further in Screening Y/N | European Site Screened In for stage 2 Appropriate Assessment |
|---|---|--|---|--|--|
| | | Najas flexilis (Slender Naiad) [1833] | | | |
| | | Tursiops truncatus (Common Bottlenose Dolphin) [1349] | Yes - within Bottlenose Dolphin Management Unit (JNCC, 2023) ² | Yes – possible disturbance from underwater noise | |
| Lleyn Peninsula and the Sarnau SAC [Site code UK0013117] | Within Management Unit for Bottlenose Dolphin | Tursiops truncatus (Common Bottlenose Dolphin) [1349] | Yes - within Bottlenose Dolphin Management Unit (JNCC, 2023) ² | Yes – possible disturbance from underwater noise | Yes |
| Cardigan Bay SAC [Site code UK0012712] | Within Management Unit for Bottlenose Dolphin | Tursiops truncatus (Common Bottlenose Dolphin) [1349] | Yes - within Bottlenose Dolphin Management Unit (JNCC, 2023) ² | Yes – possible disturbance from underwater noise | Yes |
| Moray Firth SAC [Site code UK0019808] | Within Management Unit for Bottlenose Dolphin | Tursiops truncatus (Common Bottlenose Dolphin) [1349] | Yes - within Bottlenose Dolphin Management Unit (JNCC, 2023) ² | Yes – possible disturbance from underwater noise | Yes |
| North Anglesey Marine SAC [Site code UK0030398] | Within Management Unit for Harbour porpoise | Phocoena phocoena (Harbour Porpoise) [1351] | Yes - within Harbour Porpoise Management Unit (JNCC, 2023) ² | Yes – possible disturbance from underwater noise | Yes |

| European Site Code | Distance from the Proposed Development (km) | List of Qualifying Interests | Connections (Source-Pathway Receptors) | Qualifying Interests considered further in Screening Y/N | European Site Screened In for stage 2 Appropriate Assessment |
|--|--|--|---|--|--|
| West Wales Marine SAC [Site code UK0030397] | Within Management Unit for Harbour porpoise | Phocoena phocoena (Harbour Porpoise) [1351] | Yes - within Harbour Porpoise Management Unit (JNCC, 2023) ² | Yes – possible disturbance from underwater noise | Yes |
| Bristol Channel Approaches SAC [Site code UK003039] | Within Management Unit for Harbour porpoise | Phocoena phocoena (Harbour Porpoise) [1351] | Yes within Harbour Porpoise Management Unit (JNCC, 2023) ² | Yes – possible disturbance from underwater noise | Yes |
| Chaussée de Sein SAC [Site code FR5302007] | Within Management Unit for Bottlenose Dolphin | Tursiops truncatus (Common Bottlenose Dolphin) [1349] | Yes -within Bottlenose Dolphin Management Unit (JNCC, 2023) ² | Yes – possible disturbance from underwater noise | Yes |
| Cap Sizun SAC [Site code FR5300020] | Within Management Unit for Bottlenose Dolphin | Tursiops truncatus (Common Bottlenose Dolphin) [1349] | Yes - within Bottlenose Dolphin Management Unit (JNCC, 2023) ² | Yes – possible disturbance from underwater noise | Yes |
| Côtes de Crozon [Site code FR5302006] | Within Management Unit for Harbour porpoise and Bottlenose Dolphin | Tursiops truncatus (Common Bottlenose Dolphin) [1349] Phocoena phocoena (Harbour Porpoise) [1351] | Yes -within Bottlenose Dolphin & Harbour Porpoise Management Unit (JNCC, 2023) ² | Yes – possible disturbance from underwater noise | Yes |

| European Site Code | Distance from the Proposed Development (km) | List of Qualifying Interests | Connections (Source-Pathway Receptors) | Qualifying Interests considered further in Screening Y/N | European Site Screened In for stage 2 Appropriate Assessment |
|--|--|--|--|--|--|
| Ouessant-Molène [Site code FR5300018] | Within Management Unit for Harbour porpoise and Bottlenose Dolphin | Tursiops truncatus (Common Bottlenose Dolphin) [1349] Phocoena phocoena (Harbour Porpoise) [1351] | Yes - within Bottlenose Dolphin & Harbour Porpoise Management Unit (JNCC, 2023) ² | Yes – possible disturbance from underwater noise | Yes |
| Abers - Côte des légendes [Site code FR5300017] | Within Management Unit for Harbour porpoise and Bottlenose Dolphin | Tursiops truncatus (Common Bottlenose Dolphin) [1349] Phocoena phocoena (Harbour Porpoise) [1351] | Yes - within Bottlenose Dolphin & Harbour Porpoise Management Unit (JNCC, 2023) ² | Yes – possible disturbance from underwater noise | Yes |
| Côte de Granit rose-Sept-Iles [Site code FR5300009] | Within Management Unit for Harbour porpoise and Bottlenose Dolphin | Tursiops truncatus (Common Bottlenose Dolphin) [1349] Phocoena phocoena (Harbour Porpoise) [1351] | Yes - within Bottlenose Dolphin & Harbour Porpoise Management Unit (JNCC, 2023) ² | Yes – possible disturbance from underwater noise | Yes |
| Tregor Goëlo [Site code FR5310070] | Within Management Unit for Harbour porpoise and Bottlenose Dolphin | Tursiops truncatus (Common Bottlenose Dolphin) [1349] Phocoena phocoena (Harbour Porpoise) [1351] | Yes - within Bottlenose Dolphin & Harbour Porpoise Management Unit (JNCC, 2023) ² | Yes – possible disturbance from underwater noise | Yes |

| European Site Code | Distance from the Proposed Development (km) | List of Qualifying Interests | Connections (Source-Pathway Receptors) | Qualifying Interests considered further in Screening Y/N | European Site Screened In for stage 2 Appropriate Assessment |
|---|--|--|--|--|--|
| Baie de Saint-Brieuc [Site code FR5300066] | Within Management Unit for Harbour porpoise and Bottlenose Dolphin | Tursiops truncatus (Common Bottlenose Dolphin) [1349] Phocoena phocoena (Harbour Porpoise) [1351] | Yes - within Bottlenose Dolphin & Harbour Porpoise Management Unit (JNCC, 2023) ² | Yes – possible disturbance from underwater noise | Yes |
| Cap d'Erquy-Cap Fréhel [Site code FR5300011] | Within Management Unit for Harbour porpoise and Bottlenose Dolphin | Tursiops truncatus (Common Bottlenose Dolphin) [1349] Phocoena phocoena (Harbour Porpoise) [1351] | Yes - within Bottlenose Dolphin & Harbour Porpoise Management Unit (JNCC, 2023) ² | Yes – possible disturbance from underwater noise | Yes |
| Baie de Lancieux, Baie de l'Arguenon, Archipel de Saint Malo et Dinard [Site code FR5300012] | Within Management Unit for Harbour porpoise and Bottlenose Dolphin | Tursiops truncatus (Common Bottlenose Dolphin) [1349] Phocoena phocoena (Harbour Porpoise) [1351] | Yes - within Bottlenose Dolphin & Harbour Porpoise Management Unit (JNCC, 2023) ² | Yes – possible disturbance from underwater noise | Yes |
| Iles de la Colombiere, de la Nelliere et des Haches [Site code FR5310052] | Within Management Unit for Bottlenose Dolphin | Tursiops truncatus (Common Bottlenose Dolphin) [1349] | Yes - within Bottlenose Dolphin Management Unit (JNCC, 2023) ² | Yes – possible disturbance from underwater noise | Yes |

| European Site Code | Distance from the Proposed Development (km) | List of Qualifying Interests | Connections (Source-Pathway Receptors) | Qualifying Interests considered further in Screening Y/N | European Site Screened In for stage 2 Appropriate Assessment |
|--|--|--|--|--|--|
| Côte de Cancale à Paramé [Site code FR5300052] | Within Management Unit for Bottlenose Dolphin | Tursiops truncatus (Common Bottlenose Dolphin) [1349] | Yes - within Bottlenose Dolphin Management Unit (JNCC, 2023) ² | Yes – possible disturbance from underwater noise | Yes |
| Chausey [Site code FR2500079] | Within Management Unit for Harbour porpoise and Bottlenose Dolphin | Tursiops truncatus (Common Bottlenose Dolphin) [1349] Phocoena phocoena (Harbour Porpoise) [1351] | Yes - within Bottlenose Dolphin & Harbour Porpoise Management Unit (JNCC, 2023) ² | Yes – possible disturbance from underwater noise | Yes |
| Baie du Mont Saint-Michel [Site code FR2500077] | Within Management Unit for Harbour porpoise and Bottlenose Dolphin | Tursiops truncatus (Common Bottlenose Dolphin) [1349] Phocoena phocoena (Harbour Porpoise) [1351] | Yes - within Bottlenose Dolphin & Harbour Porpoise Management Unit (JNCC, 2023) ² | Yes – possible disturbance from underwater noise | Yes |
| Nord Bretagne DH [Site code FR2502022] | Within Management Unit for Harbour porpoise and Bottlenose Dolphin | Tursiops truncatus (Common Bottlenose Dolphin) [1349] Phocoena phocoena (Harbour Porpoise) [1351] | Yes - within Bottlenose Dolphin & Harbour Porpoise Management Unit (JNCC, 2023) ² | Yes – possible disturbance from underwater noise | Yes |

| European Site Code | Distance from the Proposed Development (km) | List of Qualifying Interests | Connections (Source-Pathway Receptors) | Qualifying Interests considered further in Screening Y/N | European Site Screened In for stage 2 Appropriate Assessment |
|--|---|--|---|--|--|
| Récifs et landes de la Hague SAC [Site code FR2500084] | Within Management Unit for Harbour porpoise | Phocoena phocoena (Harbour Porpoise) [1351] | Yes - within Harbour Porpoise Management Unit (JNCC, 2023) ² | Yes – possible disturbance from underwater noise | Yes |
| Anse de Vauville SAC [Site code FR2502019] | Within Management Unit for Harbour porpoise | Phocoena phocoena (Harbour Porpoise) [1351] | Yes - within Harbour Porpoise Management Unit (JNCC, 2023) ² | Yes – possible disturbance from underwater noise | Yes |
| Banc et récifs de Surtainville SAC [Site code FR2502018] | Within Management Unit for Harbour porpoise | Phocoena phocoena (Harbour Porpoise) [1351] | Yes - within Harbour Porpoise Management Unit (JNCC, 2023) ² | Yes – possible disturbance from underwater noise | Yes |
| Estuaire de la Rance SAC [Site code FR5300061] | Within Management Unit for Harbour porpoise | Phocoena phocoena (Harbour Porpoise) [1351] | Yes - within Harbour Porpoise Management Unit (JNCC, 2023) ² | Yes – possible disturbance from underwater noise | Yes |
| Baie de Morlaix SAC [Site code FR5300015] | Within Management Unit for Harbour porpoise | Phocoena phocoena (Harbour Porpoise) [1351] | Yes - within Harbour Porpoise Management Unit (JNCC, 2023) ² | Yes – possible disturbance from underwater noise | Yes |

| European Site Code | Distance from the Proposed Development (km) | List of Qualifying Interests | Connections (Source-Pathway Receptors) | Qualifying Interests considered further in Screening Y/N | European Site Screened In for stage 2 Appropriate Assessment |
|---------------------------------|---|--|--|---|--|
| Seas off Wexford SPA [IE004237] | 0/abuts SPA boundary | Mediterranean Gull (<i>Larus melanocephalus</i>) [A176] Black-headed Gull (<i>Chroicocephalus ridibundus</i>) [A179] Lesser Black-backed Gull (<i>Larus fuscus</i>) [A183] Herring Gull (<i>Larus argentatus</i>) [A184] Kittiwake (<i>Rissa tridactyla</i>) [A188] Guillemot (<i>Uria aalge</i>) [A199] Sandwich Tern (<i>Sterna sandvicensis</i>) [A191] Roseate Tern (<i>Sterna dougallii</i>) [A192] Common Tern (<i>Sterna hirundo</i>) [A193] Arctic Tern (<i>Sterna paradisaea</i>) [A194] Little Tern (<i>Sterna albifrons</i>) [A195] | No | No | Yes |
| | | Red-throated Diver (<i>Gavia stellata</i>) [A001] Fulmar (<i>Fulmarus glacialis</i>) [A009] Manx Shearwater (<i>Puffinus puffinus</i>) [A013] Gannet (<i>Morus bassanus</i>) [A016] Cormorant (<i>Phalacrocorax carbo</i>) [A017] Shag (<i>Phalacrocorax aristotelis</i>) [A018] Common Scoter (<i>Melanitta nigra</i>) [A065] Razorbill (<i>Alca torda</i>) [A200] Puffin (<i>Fratercula arctica</i>) [A204] | Yes – diving species | Yes – possible disturbance & displacement by underwater noise | |
| Ballycotton SPA [IE004022] | 1 km | Teal (<i>Anas crecca</i>) [A052] Ringed Plover (<i>Charadrius hiaticula</i>) [A137] Golden Plover (<i>Pluvialis apricaria</i>) [A140] Grey Plover (<i>Pluvialis squatarola</i>) [A141] Lapwing (<i>Vanellus vanellus</i>) [A142] Black-tailed Godwit (<i>Limosa limosa</i>) [A156] Bar-tailed Godwit (<i>Limosa lapponica</i>) [A157] Turnstone (<i>Arenaria interpres</i>) [A169] Common Gull (<i>Larus canus</i>) [A182] Lesser Black-backed Gull (<i>Larus fuscus</i>) [A183] | No | No | No |

| European Site Code | Distance from the Proposed Development (km) | List of Qualifying Interests | Connections (Source-Pathway Receptors) | Qualifying Interests considered further in Screening Y/N | European Site Screened In for stage 2 Appropriate Assessment |
|-----------------------------|---|---|--|---|--|
| | | Wetland and Waterbirds [A999] | | | |
| Cork Harbour SPA [IE004030] | 1.2 | Grey Heron [A028] Pintail [A054] Oystercatcher [A130] Golden Plover [A140] Grey Plover [A141] Lapwing [A142] Dunlin [A149] Black-tailed Godwit [A156] Bar-tailed Godwit [A157] Curlew [A160] Redshank [A162] Black-headed Gull [A179] Common Gull [A182] Lesser Black-backed Gull [A183] Wigeon [A050] Great Crested Grebe [A005] Common Tern [A193] Teal [A052] Shelduck [A048] Red-breasted Merganser [A069] Common Tern [A193] Wetland and Waterbirds [A999] | No | No | Yes |
| | | Cormorant [A017] Shoveler [A056] Little Grebe [A004] | Yes – diving species | Yes – possible disturbance & displacement by underwater noise | |

| European Site Code | Distance from the Proposed Development (km) | List of Qualifying Interests | Connections (Source-Pathway Receptors) | Qualifying Interests considered further in Screening Y/N | European Site Screened In for stage 2 Appropriate Assessment |
|--|---|---|--|---|--|
| Ballymacoda Bay SPA [IE004023] | 2.2 | <p>Wigeon (<i>Anas penelope</i>) [A050] Teal (<i>Anas crecca</i>) [A052] Ringed Plover (<i>Charadrius hiaticula</i>) [A137] Golden Plover (<i>Pluvialis apricaria</i>) [A140] Grey Plover (<i>Pluvialis squatarola</i>) [A141] Lapwing (<i>Vanellus vanellus</i>) [A142] Sanderling (<i>Calidris alba</i>) [A144] Dunlin (<i>Calidris alpina</i>) [A149] Black-tailed Godwit (<i>Limosa limosa</i>) [A156] Bar-tailed Godwit (<i>Limosa lapponica</i>) [A157] Curlew (<i>Numenius arquata</i>) [A160] Redshank (<i>Tringa totanus</i>) [A162] Turnstone (<i>Arenaria interpres</i>) [A169] Black-headed Gull (<i>Chroicocephalus ridibundus</i>) [A179] Common Gull (<i>Larus canus</i>) [A182] Lesser Black-backed Gull (<i>Larus fuscus</i>) [A183] Wetland and Waterbirds [A999]</p> | No | No | No |
| SPA - Helvick Head to Ballyquin SPA [IE004192] | 6.5 | <p>Peregrine (<i>Falco peregrinus</i>) [A103] Herring Gull (<i>Larus argentatus</i>) [A184] Kittiwake (<i>Rissa tridactyla</i>) [A188] Chough (<i>Pyrrhocorax pyrrhocorax</i>) [A346]</p> | No | No | Yes |
| | | <p>Cormorant (<i>Phalacrocorax carbo</i>) [A017]</p> | Yes – diving species | Yes – possible disturbance & displacement by underwater noise | |
| Blackwater Estuary SPA [IE004028] | 7 | <p>Wigeon (<i>Anas penelope</i>) [A050] Golden Plover (<i>Pluvialis apricaria</i>) [A140] Lapwing (<i>Vanellus vanellus</i>) [A142]</p> | | | |

| European Site Code | Distance from the Proposed Development (km) | List of Qualifying Interests | Connections (Source-Pathway Receptors) | Qualifying Interests considered further in Screening Y/N | European Site Screened In for stage 2 Appropriate Assessment |
|------------------------------------|---|--|--|---|--|
| | | Dunlin (<i>Calidris alpina</i>) [A149] Black-tailed Godwit (<i>Limosa limosa</i>) [A156] Bar-tailed Godwit (<i>Limosa lapponica</i>) [A157] Curlew (<i>Numenius arquata</i>) [A160] Redshank (<i>Tringa totanus</i>) [A162] Wetland and Waterbirds [A999] | | | |
| Mid-Waterford Coast SPA [IE004030] | 7 | Peregrine (<i>Falco peregrinus</i>) [A103] Herring Gull (<i>Larus argentatus</i>) [A184] Chough (<i>Pyrrhocorax pyrrhocorax</i>) [A346] | No | No | Yes |
| | | Cormorant (<i>Phalacrocorax carbo</i>) [A017] | Yes – diving species | Yes – possible disturbance & displacement by underwater noise | |
| Dungarvan Harbour SPA [IE004032] | 7.5 | Great Crested Grebe (<i>Podiceps cristatus</i>) [A005] Light-bellied Brent Goose (<i>Branta bernicla hrota</i>) [A046] Shelduck (<i>Tadorna tadorna</i>) [A048] Red-breasted Merganser (<i>Mergus serrator</i>) [A069] Oystercatcher (<i>Haematopus ostralegus</i>) [A130] Golden Plover (<i>Pluvialis apricaria</i>) [A140] Grey Plover (<i>Pluvialis squatarola</i>) [A141] Lapwing (<i>Vanellus vanellus</i>) [A142] Knot (<i>Calidris canutus</i>) [A143] Dunlin (<i>Calidris alpina</i>) [A149] Black-tailed Godwit (<i>Limosa limosa</i>) [A156] Bar-tailed Godwit (<i>Limosa lapponica</i>) [A157] Curlew (<i>Numenius arquata</i>) [A160] Redshank (<i>Tringa totanus</i>) [A162] Turnstone (<i>Arenaria interpres</i>) [A169] | No | No | No |

| European Site Code | Distance from the Proposed Development (km) | List of Qualifying Interests | Connections (Source-Pathway Receptors) | Qualifying Interests considered further in Screening Y/N | European Site Screened In for stage 2 Appropriate Assessment |
|------------------------------------|---|--|--|---|--|
| | | Wetland and Waterbirds [A999] | | | |
| Tramore Back Strand SPA [IE004027] | 8 | Light-bellied Brent Goose (<i>Branta bernicla hrota</i>) [A046] Golden Plover (<i>Pluvialis apricaria</i>) [A140] Grey Plover (<i>Pluvialis squatarola</i>) [A141] Lapwing (<i>Vanellus vanellus</i>) [A142] Dunlin (<i>Calidris alpina</i>) [A149] Black-tailed Godwit (<i>Limosa limosa</i>) [A156] Bar-tailed Godwit (<i>Limosa lapponica</i>) [A157] Curlew (<i>Numenius arquata</i>) [A160] Wetland and Waterbirds [A999] | No | No | No |
| Saltee Islands SPA | 13.5 | Lesser Black-backed Gull (<i>Larus fuscus</i>) [A183] Herring Gull (<i>Larus argentatus</i>) [A184] Kittiwake (<i>Rissa tridactyla</i>) [A188] | No | No | Yes |
| | | Fulmar (<i>Fulmarus glacialis</i>) [A009] Gannet (<i>Morus bassanus</i>) [A016] Cormorant (<i>Phalacrocorax carbo</i>) [A017] Shag (<i>Phalacrocorax aristotelis</i>) [A018] Guillemot (<i>Uria aalge</i>) [A199] Razorbill (<i>Alca torda</i>) [A200] Puffin (<i>Fratercula arctica</i>) [A204] | Yes – diving species | Yes – possible disturbance & displacement by underwater noise | |

Step 3 Assessment of Likely Significant Effects

| | |
|---|---|
| (a) Identify all potential direct and indirect impacts that may have an effect on the conservation objectives of a European site, taking into account the size and scale of the project | |
| Impacts | Possible Significance of Impacts (duration, magnitude etc.) |
| Disturbance from underwater noise | Possible temporal impacts on Marine Mammals and Birds. |
| Disturbance & displacement by underwater noise | Possible temporal impacts on Birds. |

In-Combination Effects

MARA has developed a stepwise approach for identifying other In-Combination plans and projects (see description on MARA website).

Using professional and scientific judgement, the key steps for assessing cumulative effects are as follows:

1. Defining the Cumulative Effects Spatial Scope (CESS)
2. Defining the Cumulative Effects Temporal Scope (CETS)
3. Impact identification
4. Pathway identification
5. Prediction
6. Identification of Plans or Projects that could act in combination
7. Screening Stage Cumulative Effects Assessment conclusion
8. Managing cumulative impacts - to be carried out as part of Stage 2 AA process

The CESS has been defined as 5 km and the CETS as 1 year. The definition of the CESS is based on acoustic survey equipment effective deterrence ranges as per JNCC Guidance on Assessing the Significance of Noise Disturbance against Harbour Porpoise SACs Conservation Objectives (JNCC, 2020³). And the CETS is the Maritime Usage Licence period.

Using the above 8 step approach, and following a search of relevant databases undertaken on the 20th of March 2024, the below projects have been identified as potential in-combination projects:

| Application reference no. | Project | Approximate Distance from MUL Area | Project Status | Cumulative Effects |
|---------------------------|--|------------------------------------|---|---|
| FS007616 | Ruby Offshore Energy Site Investigations for Offshore Wind Farm, off the coast of Counties Wexford, Waterford and cork | 0km | Proposed – Foreshore licence submitted 23/02/23 | Spatial overlap with DECC Maritime Usage Licence Area. Within the CESS. Possible temporal overlap |

| | | | | |
|----------|--|-----|---|---|
| FS007471 | Floating Cork Offshore Wind Ltd Site investigations | 0km | Proposed – Foreshore licence submitted 22/09/22 | Spatial overlap with DECC Maritime Usage Licence Area. Within the CESS. Possible temporal overlap |
| FS007318 | RWE Renewables Ireland East Celtic Ltd site investigations for proposed offshore wind park | 0km | Proposed – Foreshore licence submitted 10/03/21 | Spatial overlap with DECC Maritime Usage Licence Area. Within the CESS. Possible temporal overlap |
| FS007445 | Blackwater OWL Offshore Wind Ltd. marine surveys off the Wexford coast | 0km | Proposed – Foreshore licence submitted 09/05/22 | Spatial overlap with DECC Maritime Usage Licence Area. Within the CESS. Possible temporal overlap |
| FS006982 | Energia site investigations for wind farm off Helvick Head | 0km | Approved but not completed – Foreshore licence awarded 28/09/21 | Spatial overlap with DECC Maritime Usage Licence Area. Within the CESS. Possible temporal overlap |
| FS007384 | Celtic Horizon Offshore Wind Farm Ltd site investigations off the coast of Wexford and Waterford | 0km | Proposed – Foreshore licence submitted 02/06/21 | Spatial overlap with DECC Maritime Usage Licence Area. Within the CESS. Possible temporal overlap |
| FS007464 | Bore Array Ltd site investigations for wind farm off Co. Wexford | 0km | Proposed – Foreshore licence submitted 08/04/22 | Spatial overlap with DECC Maritime Usage Licence Area. Within the CESS. Possible temporal overlap |
| FS007488 | Celtic Offshore Renewable Energy site investigation off the coast of Wexford and Waterford | 0km | Proposed – Foreshore licence submitted 22/04/22 | Spatial overlap with DECC Maritime Usage Licence Area. Within the CESS. Possible temporal overlap |
| FS007621 | Péarla Offshore Wind Ltd. Site investigations for export cable for proposed offshore wind farm | 0km | Proposed – Foreshore licence submitted 24/10/22 | Spatial overlap with DECC Maritime Usage Licence Area. Within the CESS. Possible temporal overlap |
| FS007436 | Voyage Offshore Array Ltd. site investigations off coast of Wexford and Waterford | 0km | Proposed – Foreshore licence submitted 14/02/22 | Spatial overlap with DECC Maritime Usage Licence Area. Within the CESS. Possible temporal overlap |

| | | | | |
|-----------|---|-----|--|--|
| FS007431 | Tulca Offshore Array Ltd: site investigations off County Cork | 0km | Proposed – Foreshore licence submitted 14/02/22 | Spatial overlap with DECC Maritime Usage Licence Area. Within the CESS. Possible temporal overlap |
| FS007575 | Kinsale Offshore Wind Ltd site investigations off County Cork | 0km | Proposed – Foreshore licence submitted 26/08/22 | Spatial overlap with DECC Maritime Usage Licence Area. Within the CESS. Possible temporal overlap |
| FS006983 | SSE Renewables Celtic Sea site investigations off County Cork | 0km | Proposed – Foreshore licence submitted 19/03/19 | Spatial overlap with DECC Maritime Usage Licence Area. Within the CESS. Possible temporal overlap |
| LIC230017 | Microsoft Ireland Operations Ltd investigations for fibre optic cable | 0km | Proposed – Maritime Usage Licence submitted 14/12/23 | Spatial overlap with DECC Maritime Usage Licence Area. Within the CESS. Possible temporal overlap |
| S0013-03 | Port of Cork Company Dumping at Sea permit | 0km | Approved but not completed - permission granted 04/08/2023 | Spatial overlap with Doyle shipping Maritime Usage Licence Area. |
| FS007126 | Port of Cork Maintenance Dredging | 0km | Approved but not completed - licence granted 08/09/2023 | Spatial overlap with Doyle shipping Maritime Usage Licence Area. Within the CESS. Possible temporal overlap. |
| FS007376 | Uisce Éireann ADCP Surveys at Cork Harbour | 0km | Proposed – Foreshore licence submitted 30/09/22 | Spatial overlap with DECC Maritime Usage Licence Area. Within the CESS. Possible temporal overlap |
| FS007482 | Department of Defence dredging at Haulbowline Naval Base | 5km | Proposed – Foreshore licence submitted 13/07/23 | No Spatial overlap with DECC Maritime Usage Licence Area. Within the CESS. Possible temporal overlap. |

The following plans, related to the development of the maritime environment were also identified:

- The Climate Action Plan 2023
- River Basin Management Plans (RBMP)
- Designated Maritime Area Plans (DMAPs)

These plans promote sustainable development in the maritime environment and particularly Ireland’s Climate Action Plan’s renewable electricity target of 80% of energy generated from renewable electricity sources by 2030.

Likely significant in-combination effects between this project and the above listed 18 projects and 3 plans on the conservation objectives of Natura 2000 sites considered in this report cannot be excluded at this stage.

| (b) Describe any likely changes to the European site: | |
|--|---|
| Reduction or Fragmentation of habitat area | Not likely |
| Disturbance to QI species | Disturbance to Annex II Marine Mammal species and Birds cannot be excluded at this stage. |
| Changes in key indicators of conservation status value | Not likely |
| Changes to areas of sensitivity or threats to QI | Disturbance to Annex II Marine Mammal species and Birds cannot be excluded at this stage. |
| Interference with the key relationships that define the structure or ecological function of the site | Not likely |

Were mitigation measures considered during the screening process?

No

Step 4 Screening Determination Statement

The assessment of significant effects:



On the basis of the information on file, and having regard to:

- The nature and scale of the proposed development
- The distance to the nearest European site
- The potential for in-combination effects with other plans and projects
- Possible disturbance from underwater noise
- Possible disturbance & displacement by underwater noise

Having considered the legal framework applicable to Appropriate Assessment it was concluded that the proposal by DECC to carry out a geophysical site investigation surveys will require Appropriate Assessment as it cannot be excluded on the basis of objective scientific information, following screening that the proposed activities, individually or in combination with other plans or projects, will have a significant effect on a European Site.

Conclusion

| | Tick as appropriate | Recommendation |
|--|---------------------|----------------|
| (i) It is clear that there is no likelihood of significant/possible effects on a European site | | |

| | | |
|--|---|---|
| (ii) It is uncertain whether the proposal will have a significant/possible effect on a European site | <input checked="" type="checkbox"/> | Proceed to Stage 2 Appropriate Assessment |
| (iii) Significant effects are likely | | |
| Signature and Date of Recommending Officer |  21 st March 2024 | |
| Signature and Date of Decision Maker |  21 st March 2024 | |

¹ Carter et al, 2022 - Carter et al, 2022. Sympatric Seals, Satellite Tracking and Protected Areas: Habitat-Based Distribution Estimates for Conservation and Management, *Frontiers in Marine Science*, v9 2022.

² JNCC 2023 - IAMMWG. 2023. Review of Management Unit boundaries for cetaceans in UK waters (2023). JNCC Report 734, JNCC, Peterborough, ISSN 0963-8091.
<https://data.jncc.gov.uk/data/b48b8332-349f-4358-b080-b4506384f4f7/jncc-report-734.pdf>

³ JNCC, 2020 - JNCC (2020). Guidance for assessing the significance of noise disturbance against Conservation Objectives of harbour porpoise SACs (England, Wales & Northern Ireland). JNCC Report No. 65.

Appendix 1

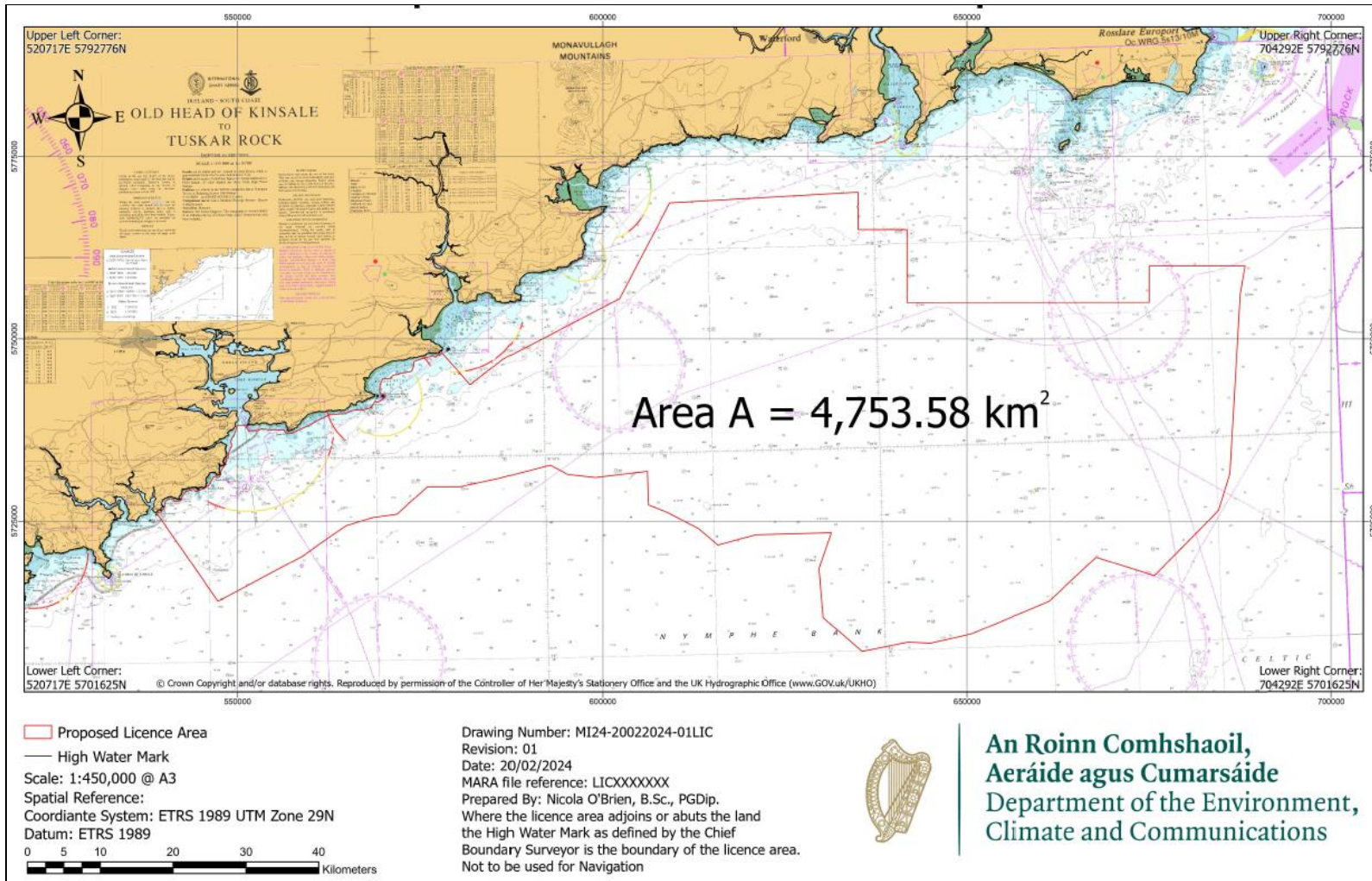


Figure 1 – Proposed Maritime Usage Licence Area